

User Guide

OnGuard OpenVideo Integration

Table of Content

| | |
|---|----|
| Document information | 4 |
| Document revision history | 4 |
| Introduction | 5 |
| Version Compatibility | 5 |
| Feature Matrix | 6 |
| Limitations | 7 |
| XProtect Recording server data encryption | 7 |
| Installation | 7 |
| Pre-Requisites | 7 |
| Installation Overview | 7 |
| Adding Recorder | 10 |
| Adding Cameras | 12 |
| Video in System Administration | 14 |
| Video in OnGuard VideoViewer | 15 |
| Live Video and PTZ | 15 |
| Presets | 16 |
| Recorded Video | 17 |
| Export Video | 20 |
| Camera Tours | 21 |
| Creating a Tour | 21 |
| Viewing Tour | 24 |
| Viewing Video linked to alarms | 25 |
| Event Video (Live and/or playback) | 25 |
| Alarm-Video Configuration | 25 |

| | |
|--|----|
| Device-Camera Links Configuration | 26 |
| Video display on alarm | 27 |
| Upgrading from a previous version of the AddOn | 28 |
| Fill missing connection information in Lenel UI | 28 |
| Force Lenel UI to update camera list in Lenel database | 29 |
| Logging | 30 |
| Gathering the logs | 30 |
| Changing logging level | 30 |
| Troubleshooting | 31 |

Document information

| | |
|-------------------------|---|
| Project Name | Milestone Xprotect to Lenel's OnGuard Integration User Manual |
| Document Version | 2.0 |

Document revision history

| Revision Date | Author | Summary of changes | Changes marked |
|---------------|--------|--|----------------|
| 2011-10-17 | SR | Initial version for OnGuard 6.3 | 1.0 |
| 2012-05-09 | SR | Support for OG v6.4 and XPCO 5.0 | 1.1 |
| 2013-04-02 | SR | Support for OG v6.5, v6.6 | 1.2 |
| 2013-05-27 | SR | Support for XPCO 6.0, Expert | 1.3 |
| 2014-12-03 | JFM | Support for XPCO 2014, OnGuard 6.6, 7.0 Added support for Camera Import feature Added support for PTZ Preset import | 1.4 |
| 2016-12-07 | JFM | Support for XPCO 2016, OnGuard 7.1, 7.2, 7.3 | 1.5 |
| 2018-01-18 | SRB | Support for: <ul style="list-style-type: none"> XProtect Corporate 2017 R1/R2/R3 XProtect Professional+ 2017 XProtect Expert 2017 XProtect Express+ 2017 Support for OnGuard 7.4 | 1.6 |
| 2018-11-30 | MAE | Added support for: <ul style="list-style-type: none"> XProtect 2018 R1/R2/R3 Support for OnGuard 7.5 | 1.7 |
| 2019-08-28 | SRB | Removed MilestoneCfgGen command-line tool references. Added Version Compatibility section. Removed references to OnGuard versions prior to 7.1. New document template. | 1.8 |
| 2019-09-24 | SRB | Added support for XProtect Recording Servers Encryption (2019 R1 and up) Replaced Milestone 3.5 SDK with MIPSDK 2019R1 | 2.0 |

Introduction

This document describes steps to integrate Milestone (XPCO) X-Protect Corporate Video Management System with Lenel's OnGuard Access Control System.

The purpose of the integration is to enable users to view live and recorded Milestone video from inside the OnGuard user interface. The integration will allow users to view OnGuard data and Milestone video from a single integrated console instead of requiring two consoles, one to view OnGuard information and another to view Milestone video.

This integration will provide access to basic features of the Milestone VMS from inside OnGuard. To access the complete and extended features of the Milestone Video Management System, use the stand-alone Milestone Smart Client application.

Version Compatibility

The Milestone XProtect® Integration with OnGuard has been tested with Milestone XProtect® Corporate (XPCO) and OnGuard according to the following table.

| OnGuard | XPCO 2016 R1-R2-R3 | XPCO 2017 R1-R2-R3 | XPCO 2018 R1 | XPCO 2018 R2 | XPCO 2018 R3 | XPCO 2019 R1 | XPCO 2019 R2 |
|---------|-----------------------|-----------------------|-----------------|-----------------|-----------------|-----------------|-----------------|
| 7.3 | S | S | S | S | S | S | S |
| 7.4 | S | S | S | S | S | S | S |
| 7.5 | S | S | S | T | S | T | T |

T: [Tested]. Fully tested and supported.

S: [Supported] Tests were done to make sure the integration is compatible.

Feature Matrix

| Video feature | "X" indicates supported | Notes |
|---|-------------------------|---------------------------|
| Live Video | X | |
| Text Overlay | Not Supported | No plans to support this. |
| Pre-recorded Video Playback | X | |
| Status | X | |
| Export To AVI | X | |
| Time Synchronization | X | |
| Record Start (On Demand) | Not Supported | |
| Frame Rate Adjustment | Not Supported | Needs setup in Milestone |
| Record Stop (On Demand) | Not Supported | Needs setup in Milestone |
| PTZ | X | |
| Video Alarms | X | See alarms table below. |
| Video Tour | X | OnGuard implements tours |
| Video View Up To 16 Cameras | X | |
| Presets & Patterns | X | Presets only |
| View Live & Recorded Video from multiple cameras | X | |
| PTZ Presets & Presets based on event, alarm input | X | |
| Replay Up To 4 Cameras for same Time Interval | X | |
| Toggle Video Window Size from 1x to 4x | X | |
| Display Up To 4 Live Video Windows based on Event | X | |
| Original Recorded Video Cannot be Altered | X | |
| Playback and Recorded Video in one window | X | |
| Bi-directional Actions | Not Supported | |
| Camera Import into OnGuard | X | Added in v1.4 |
| Preset Import into OnGuard | X | Added in v1.4 |
| XProtect Recording Server data encryption | X | Added in v2.0 |

Supported alarms:

| OnGuard alarm | Milestone Event Source |
|----------------------------------|------------------------|
| L_VIDEO_MOTION_DETECTED | MotionStarted |
| L_VIDEO_MOTION_DETECTED_RESTORED | MotionStopped |
| L_VIDEO_DISK_FULL | DatabaseDiskFullEvent |
| L_VIDEO_RECORDING_STOPPED | RecordingStopped |
| L_VIDEO_CAMERA_TAMPER | TamperingStart |
| L_VIDEO_CAMERA_TAMPER_RESTORE | TamperingEnd |
| L_VIDEO_FAILOVER_STARTED | FailoverStarted |
| L_VIDEO_FAILOVER_RESTORED | FailoverStopped |
| L_VIDEO_OVERFLOW_STARTED | FeedOverflowBegin |

| | |
|-----------------------------|---|
| L_VIDEO_OVERFLOW_RESTORED | FeedOverflowStopped |
| L_VIDEO_STORAGE_UNAVAILABLE | ArchiveDiskUnavailable OR DatabaseDiskUnavailable |
| L_VIDEO_SOURCE_SIGNAL_LOST | VideoLoss |
| L_VIDEO_ON_CAMERA_TRIP_WIRE | Tripwire |

Limitations

XProtect Recording server data encryption

The Recording server data encryption feature introduced with XProtect 2019 R1 is supported by the integration.

For live and playback to work when the Recording server data encryption feature is enabled in XProtect, the appropriate certificate must be installed and trusted on the client machines (where video is displayed). Please refer to the Milestone XProtect user manuals below for more details.

- Certificates Guide
- XProtect VMS Products - Hardening guide

Installation

Pre-Requisites

Prior to integration, verify that OnGuard server and OnGuard clients are configured and working normally. Also verify that the Milestone Management Server, Milestone Recording servers and cameras are installed, configured and working normally. Refer to the user manuals and documentation for OnGuard and Milestone XPCO for a comprehensive description of the installation, configuration and features of the respective systems.

Installation Overview

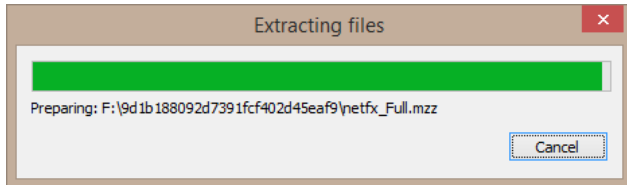
The integration solution requires following steps:

- Obtain the Microsoft .NET 4.7 and install on OnGuard server machines and OnGuard client machines where XProtect video will be viewed.
- Obtain Milestone MIPSDK 2019R1 redistributable from Milestone and install on OnGuard server machines and OnGuard client machines where XProtect video will be viewed.
- Obtain correct version of "Accessory Add-on for Milestone" from Lenel and install on OnGuard server machines and OnGuard client machines where XProtect video will be viewed.

- iv. Execute Milestone camera discovery process
- v. Setup and configure Video Recorder and Cameras in OnGuard System Administration application

Installing .NET 4.7 Runtime

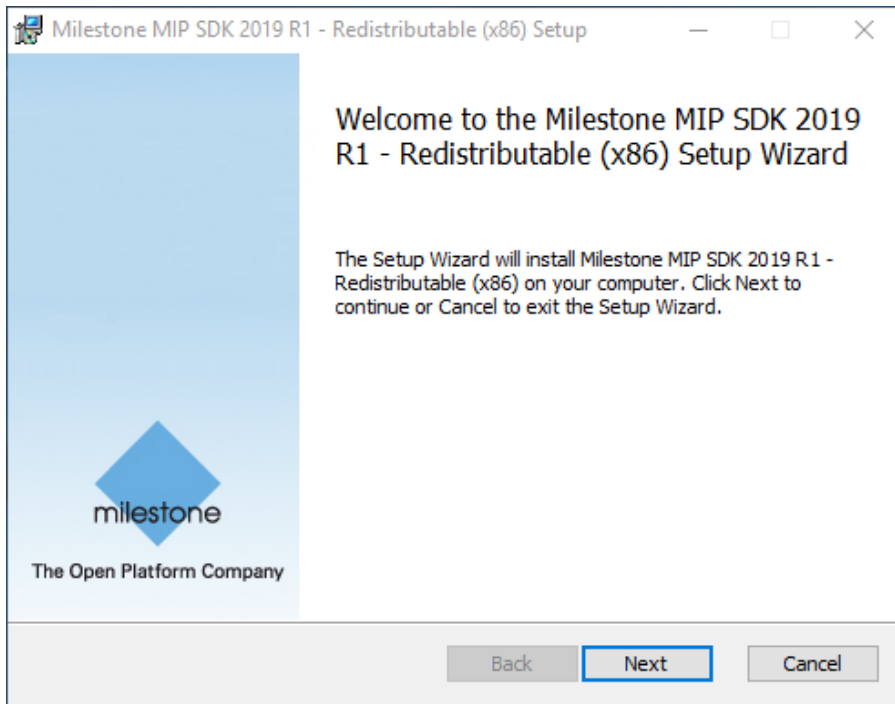
Download the .NET Framework 4.7. Install this on every Lenel OnGuard machine (LS Communication server and video clients).

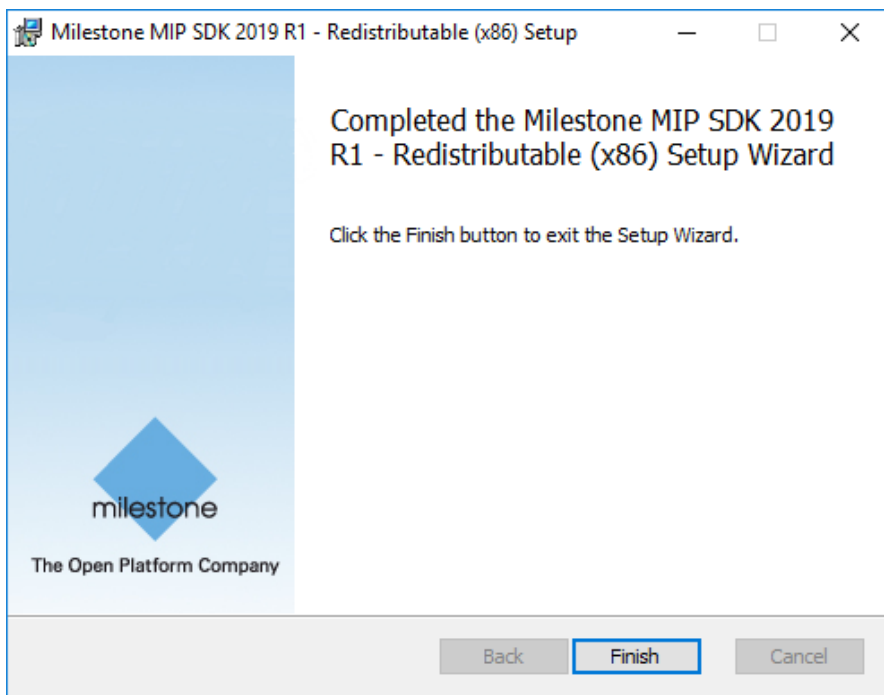
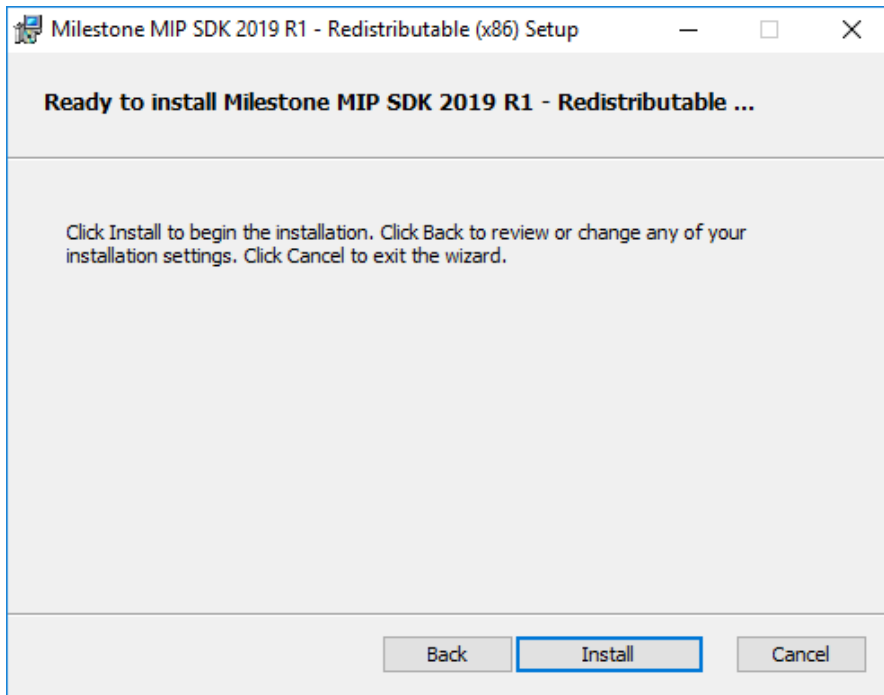


Milestone MIP SDK x86 Redistributable Install

Milestone MIP SDK x86 redistributable is required to be installed on all Lenel OnGuard Client and Server machines that need access to Milestone video.

Click "MIP SDK_Redist_Installer_x86_2019R1.msi" to start the installation. Press 'Next' as needed to complete the installation.



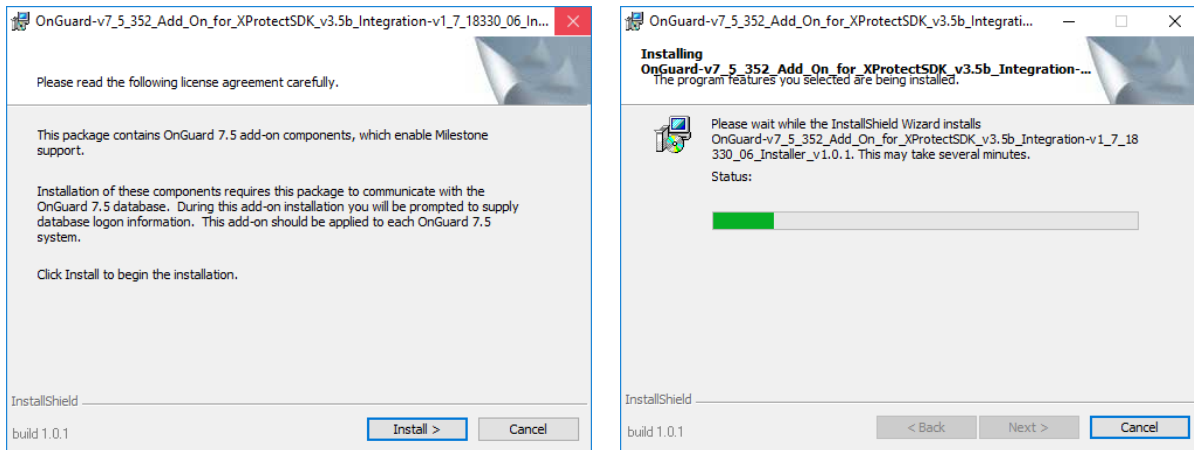


Click Finish to complete installation.

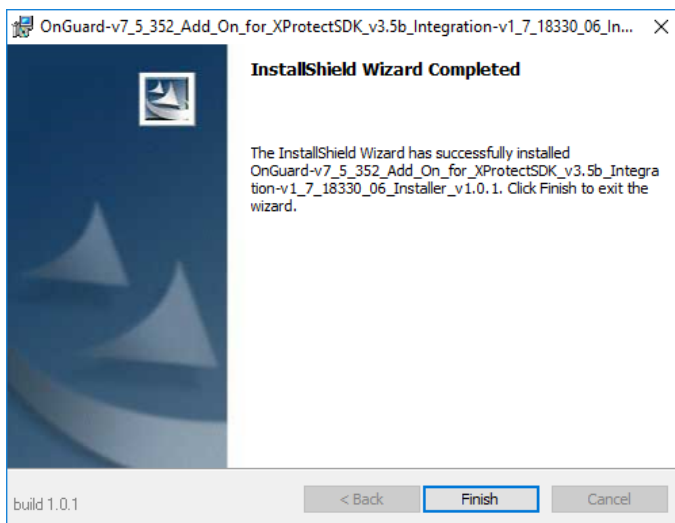
Installing Milestone-OnGuard Add-On

Since multiple versions are available in Lenel's website, ensure you obtain the correct version of add-on for Milestone to be installed.

Install add-on on all OnGuard machines where Milestone video will be viewed. To start installation in OnGuard vX system, click “OnGuard-vX-Add_On_for_XProtectSDK_v3.5b_Integration-vY_Installer_vZ” running as Administrator. X is a version number of Lenel OnGuard such as 7.5.352.



Once done, the add-on has successfully been installed:

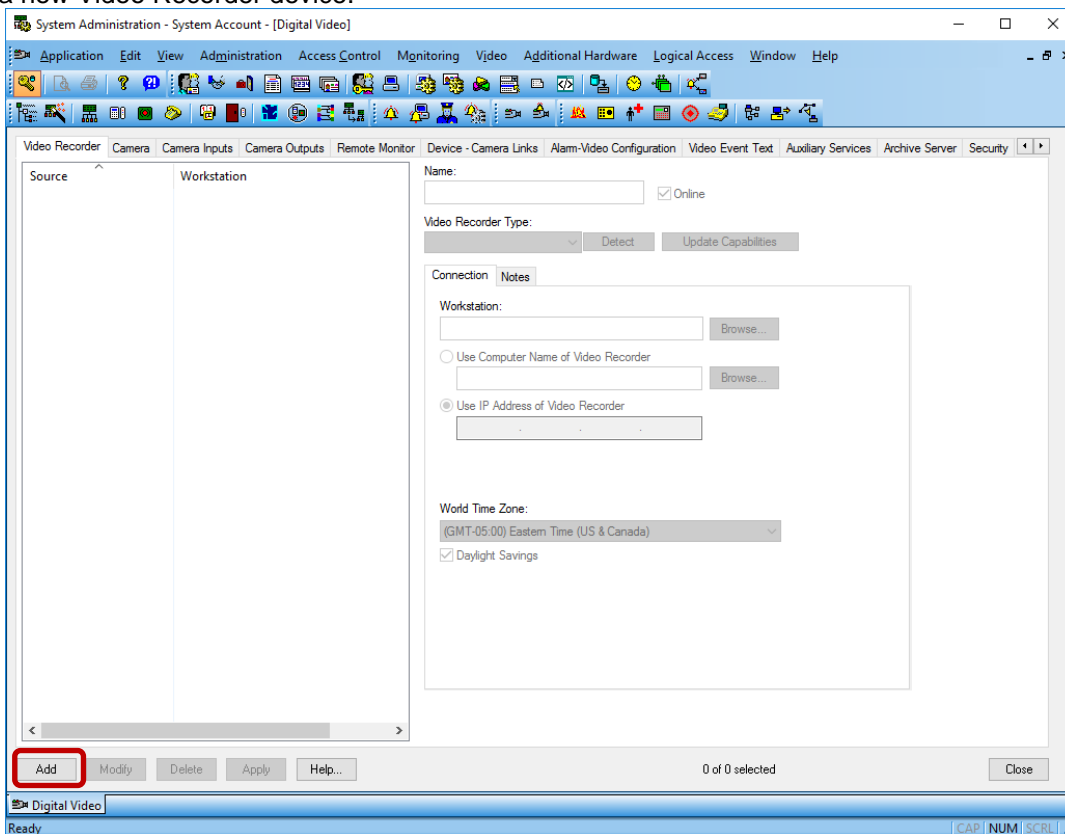


Adding Recorder

Launch “System Administration” in OnGuard and login. Select the Video menu and click on “Digital Video ...” menu item.



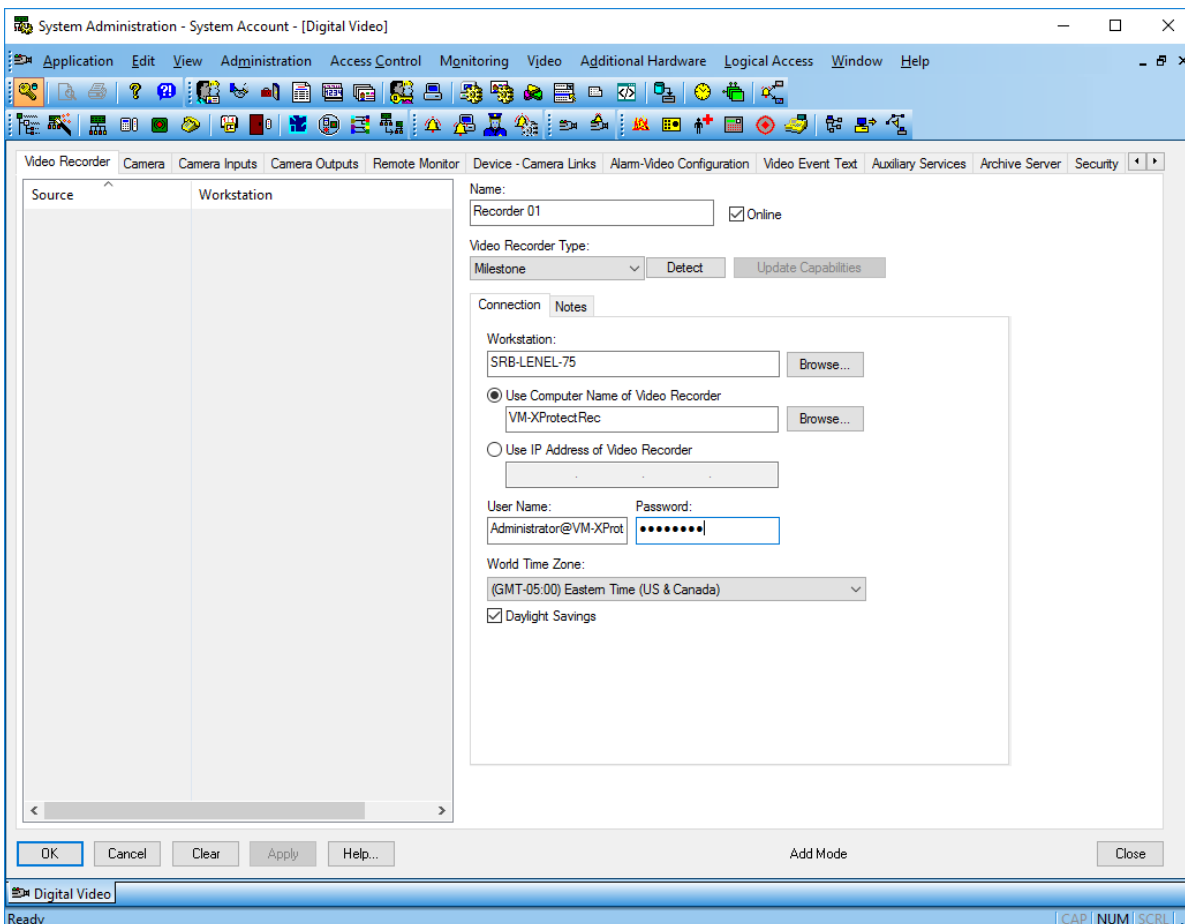
Ensure Video Recorder tab is selected. Click Add button on the left-hand bottom side of the screen to add a new Video Recorder device.



Fill the different fields described below:

- **Name:** Enter a unique name for this video recorder entry.
- **Video Recorder Type:** Select "Milestone" from the dropdown menu.
- **Workstation:** Enter the workstation name where OnGuard communication server is installed.
- **Use Computer Name/Use IP Address of Video Recorder:** Enter the IP or host name of the XProtect Recording Server.
- **User Name:** Enter the XProtect username and the Management Server hostname or IP, separated by an '@'. Ex: CUSTDEV.US\Administrator@SRB-XPRO2019
- **Password:** Enter the associated XProtect password.

Make sure you type the password even if the field already contains something. The Lenel UI is misleading because it usually opens this dialog with all the fields pre-filled with the content of the previously selected recording server, except for the password. Because the password field contains dots, one might think the value was pre-filled like the other fields, but this is not the case and the password must be typed again or the integration won't work.



Click OK to create the Video Recorder device. Repeat process to set up multiple Recording servers.

IMPORTANT:

- In order to connect to XProtect, the Add-On needs information about the XProtect Management Server (hostname + credentials). Due to limitations in the Lenel SDK and UI, the Management server hostname must be provided through the User name field.
- Please, make sure the username and the Management Server hostname are both provided in the User name field, separated by an @ sign, as described above.

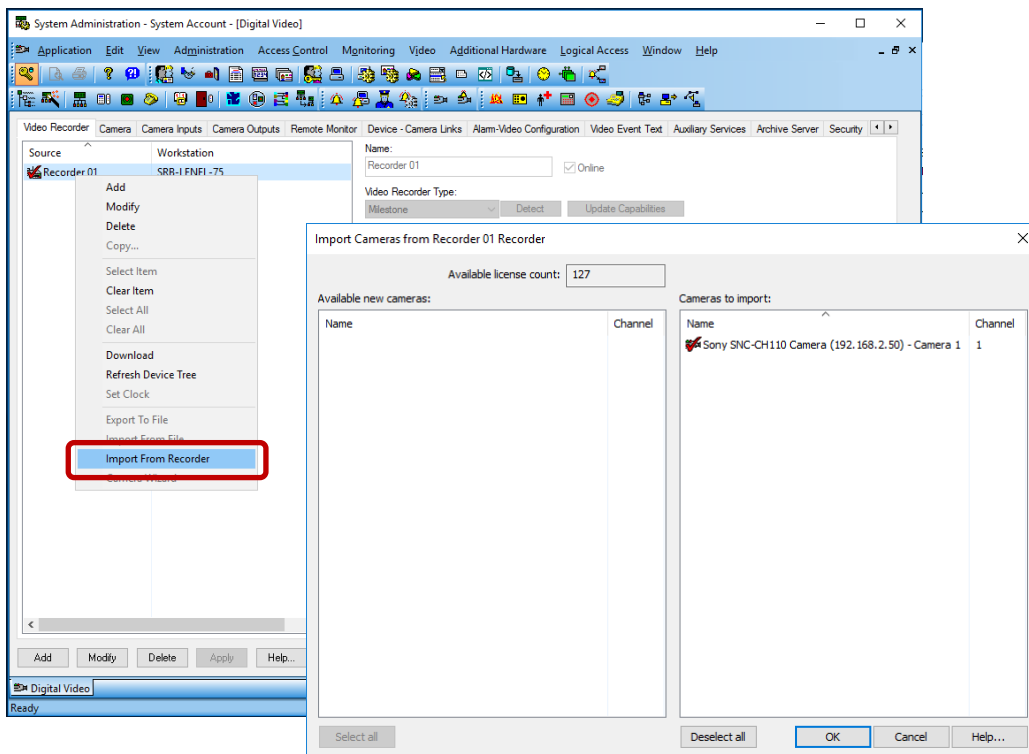
Adding Cameras

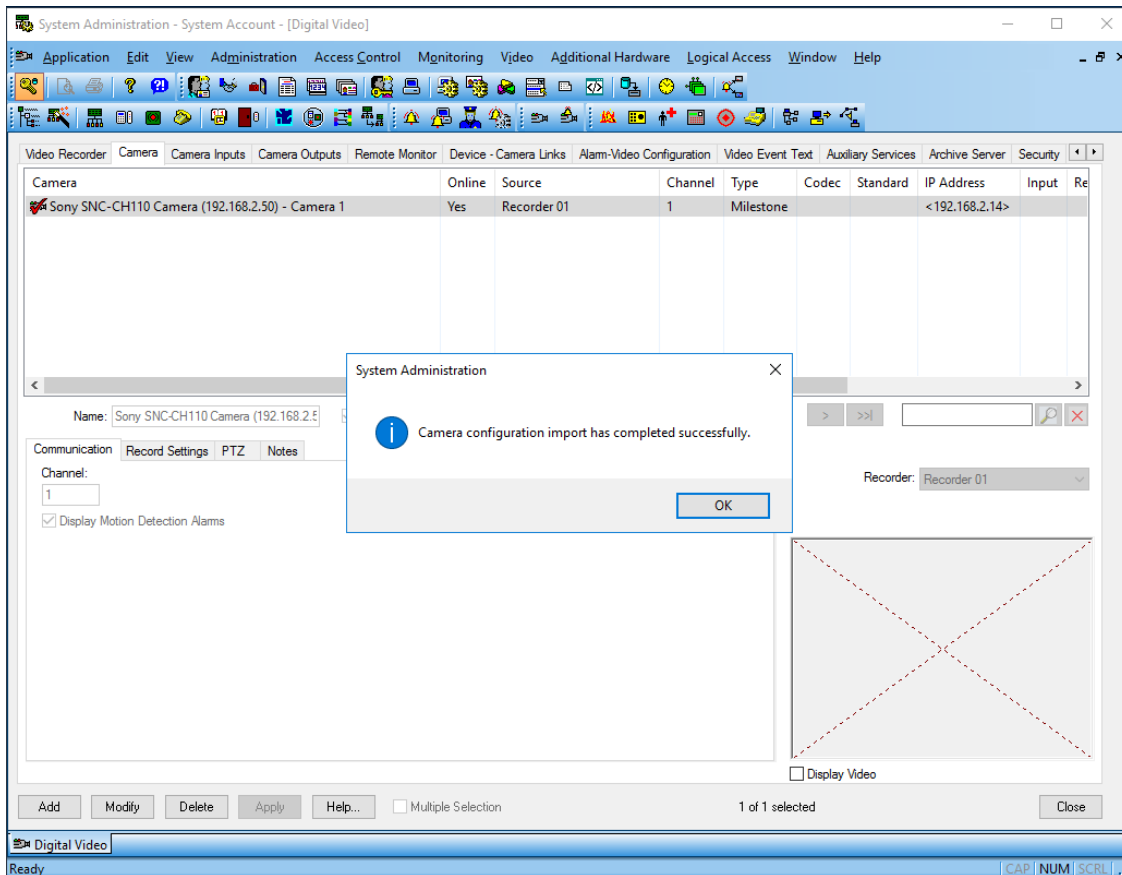
Automatically import cameras

To automatically import cameras from Milestone into OnGuard, right click on the video recorder entry and select "Import from Recorder".

The import from recorder dialog will display the list of cameras in the specified recorder, you can then select the ones you want to import into OnGuard by clicking them in the left pane, they will then transfer to the right pane. Once all desired cameras are selected for import, press OK.

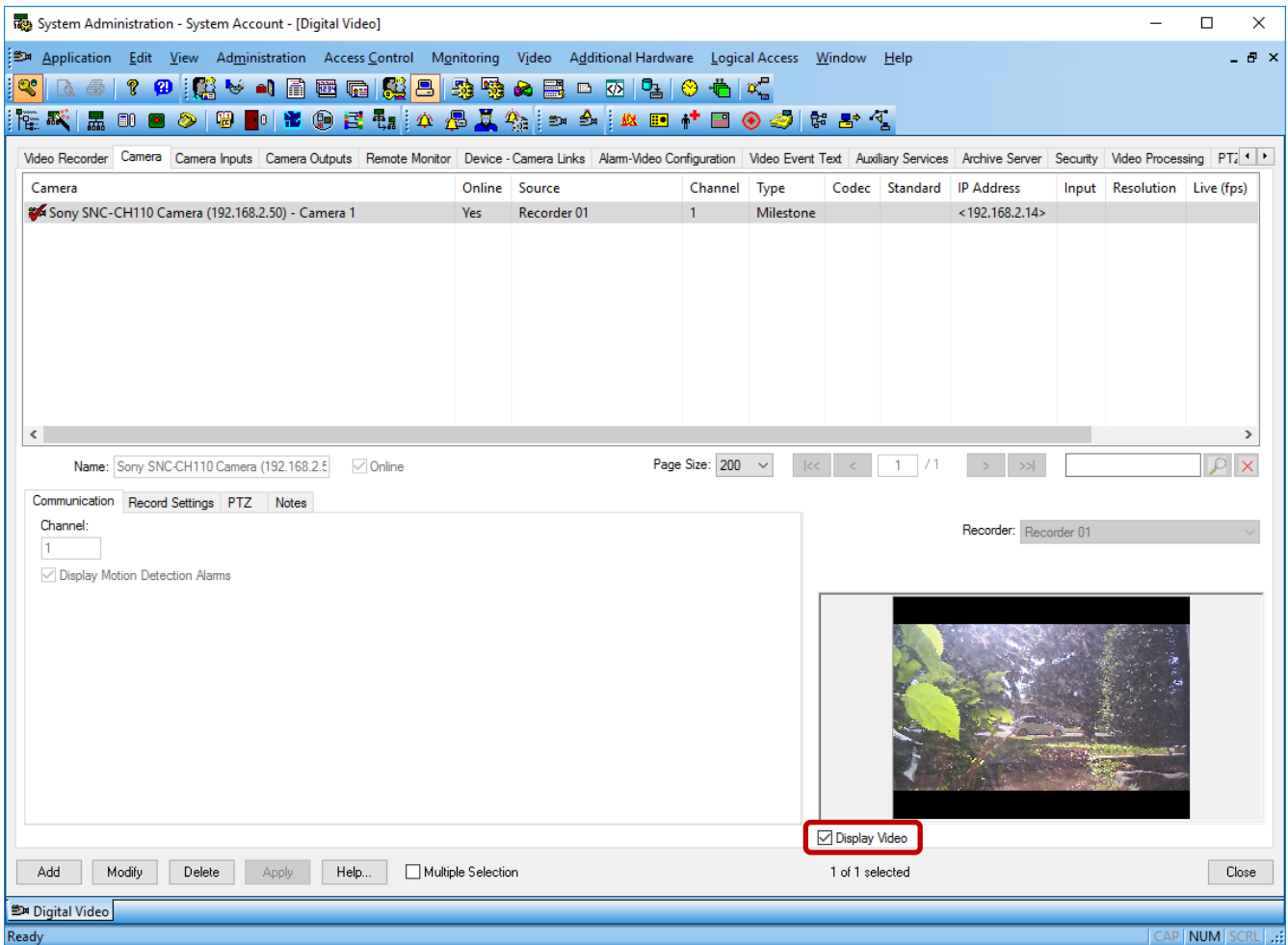
The selected cameras appear in the camera view and are ready for use.





Video in System Administration

To view live video from the newly configured cameras in the System Administration tool, select the required camera from the list of cameras in the Camera tab and check "Display Video" check box (bottom middle section of the screen).

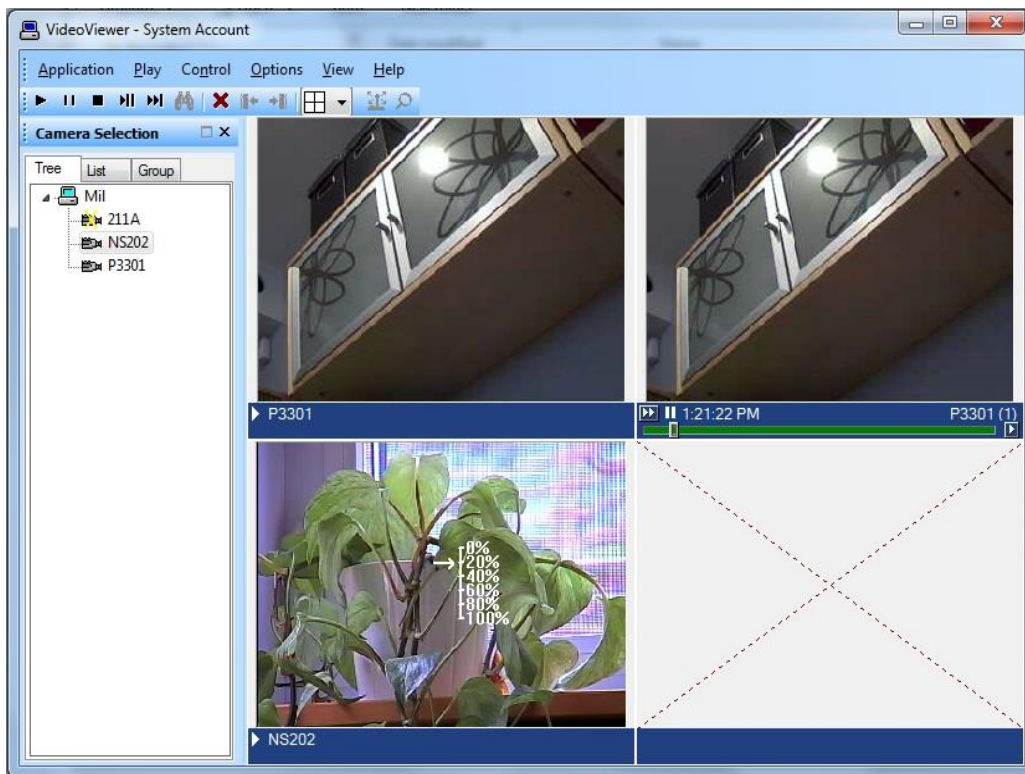


Video in OnGuard VideoViewer

Live Video and PTZ

Launch VideoViewer application in OnGuard to view live video from Milestone cameras. Select a suitable tile configuration for displaying video. Drag and drop required camera from the tree control on the left to any tile on the right to view live video from that camera.

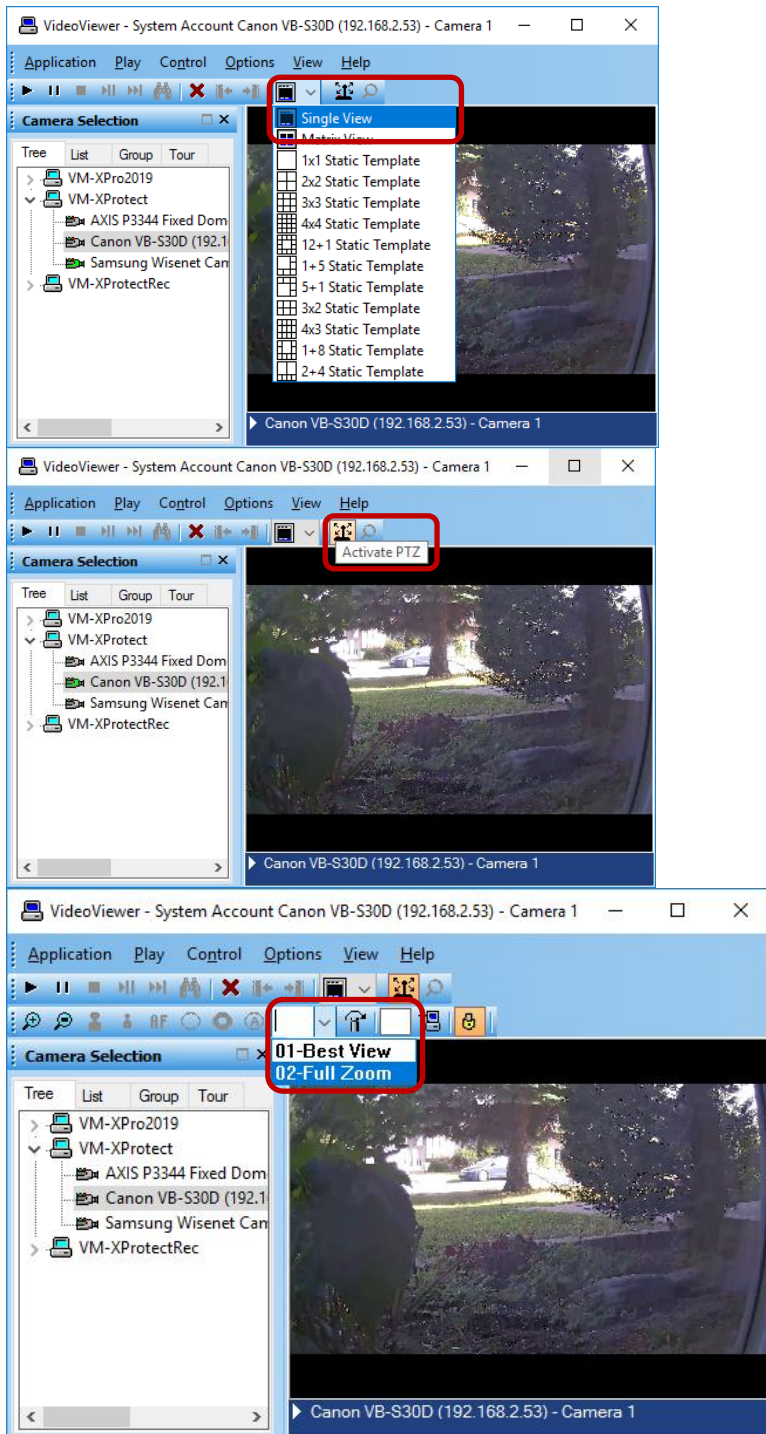
PTZ controls are handled as an overlay on the video control. If a set of cross hairs is displayed when placing mouse pointer over the image from a PTZ camera, "Point and Click" PTZ control is supported for the camera. Click on the screen to pan/tilt and zoom on the video. For some cameras, cross hairs surrounded by a square may be displayed. In this case, zoom level can be controlled by holding down SHIFT key in the keyboard while moving the mouse up or down. Zoom area can also be selected by holding down the left mouse button, drawing a square around the required area in the image and releasing the left mouse button. The scroll wheel on the mouse may also be used to zoom in/out.



Note: Integrated Milestone video from selected camera can also be viewed from Alarm Monitoring application by selecting the required camera and clicking “Launch Video” in the context menu.

Presets

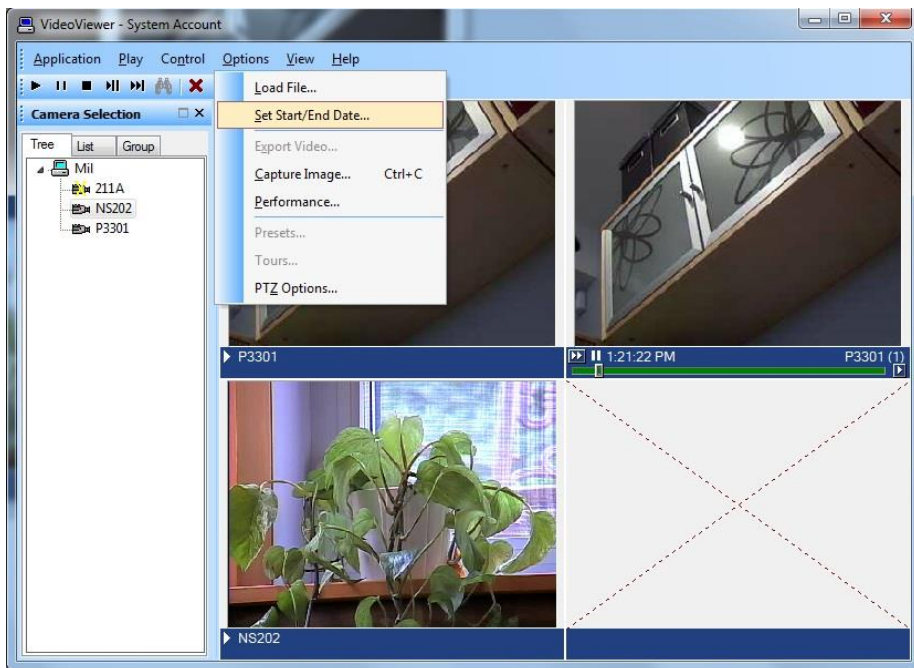
In order to use the presets defined in XProtect, live video must be displayed in a single tile (Single View) and PTZ must be activated. The list of presets will then appear in a dropdown, as shown in the screenshots below.



Recorded Video

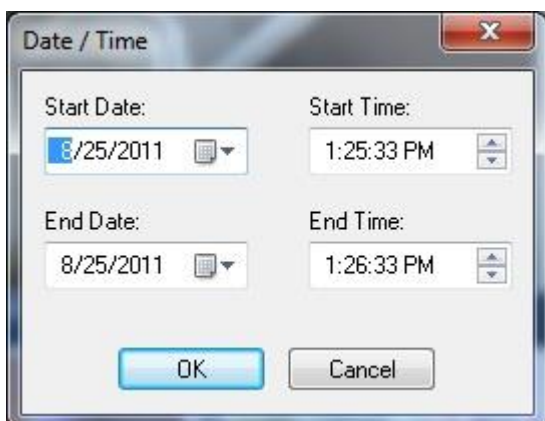
Launch VideoViewer application in OnGuard to view recorded video from Milestone cameras. Select a suitable tile configuration for displaying video. Drag and drop required cameras from the tree control on the left to any tile on the right which will stream live video from those cameras. To playback recorded video

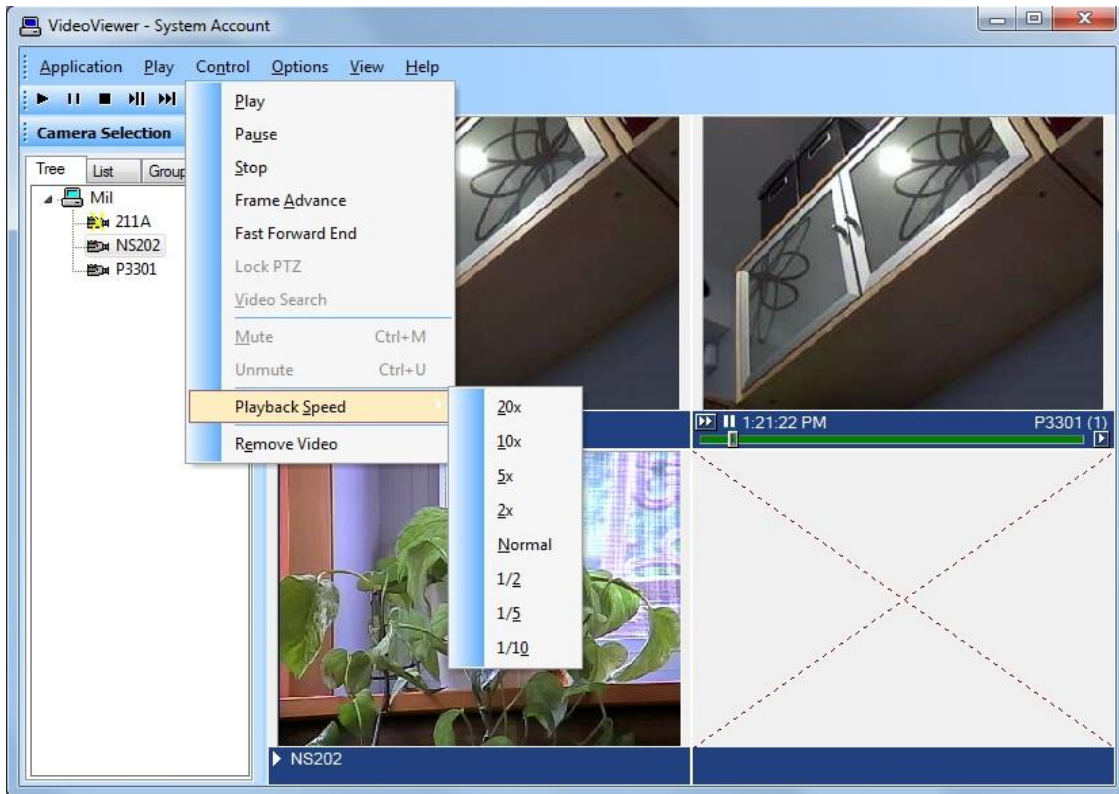
from all cameras in the display tiles starting from a selected time, right click on Options Menu and select Set Start/End Date ... menu item. To playback recorded video from a single camera, right click on the required camera name at the bottom of the tile and select Set Start/End Date ...



Note: Integrated Milestone Recorded video from selected camera can also be viewed from Alarm Monitoring application by selecting the required camera and clicking "Launch Recorded Video" in the context menu.

Set the start and end date and time of the recorded video to play back. Click OK to start playback.

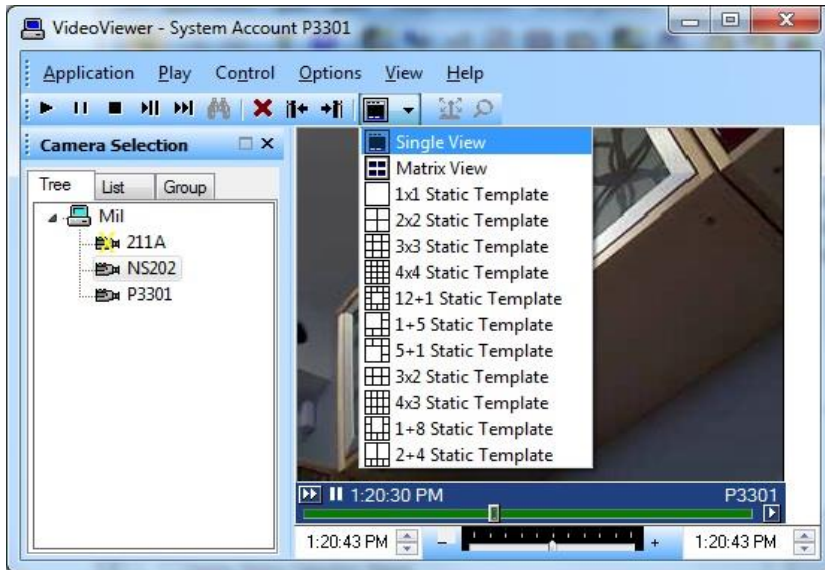




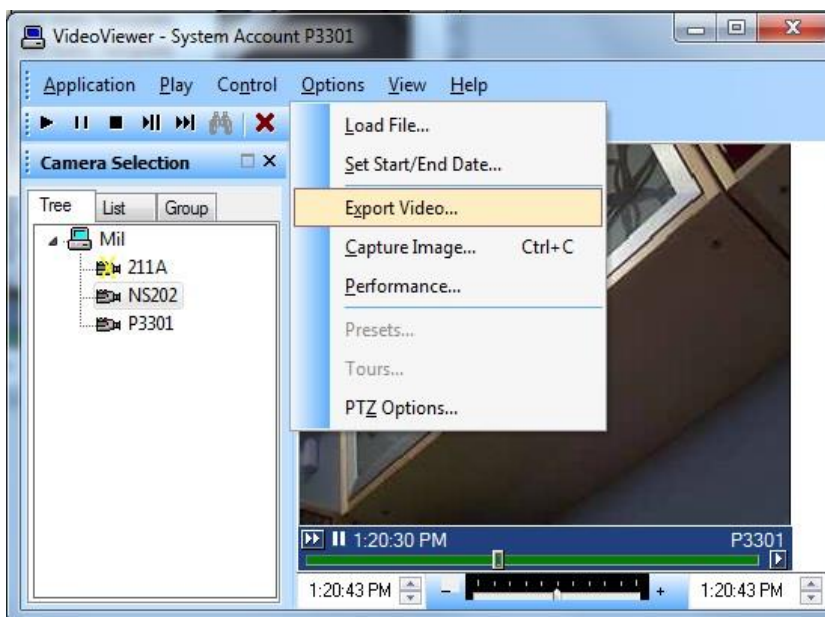
- Click “Play” control to stream video for the selected timespan.
- Click “Pause” control to pause streaming video. Click Play to continue.
- Click “Stop” control to stop streaming and go back to beginning of selected timespan.
- Click “Frame Advance” control to advance one frame and pause. Click Play to continue.
- Click anywhere in the video slider control to “Go to” video at that point. Click Play to continue.
- Set playback speed for individual camera by clicking on the appropriate position of the playback speed slider control.
- Change date/time of start and end of playback in the date/time control. Click Play to start streaming video for the new timespan.
- Adjust playback speed for all cameras in the view by selecting Playback Speed menu item from Control Menu.

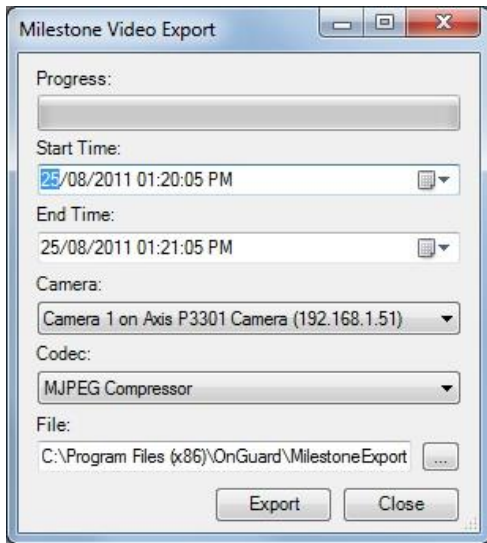
Export Video

Launch VideoViewer application in OnGuard. Drag and drop required camera into the tile on the right hand side. Right click on camera name in bottom portion of the video and click on “Recorded” to set display to playback mode. Play menu may also be clicked and “Recorded” selected to set display to playback mode. Click on tile selection icon and select “Single View”.



Click on Options Menu and click on “Export Video ...” menu item to bring up the Export screen.





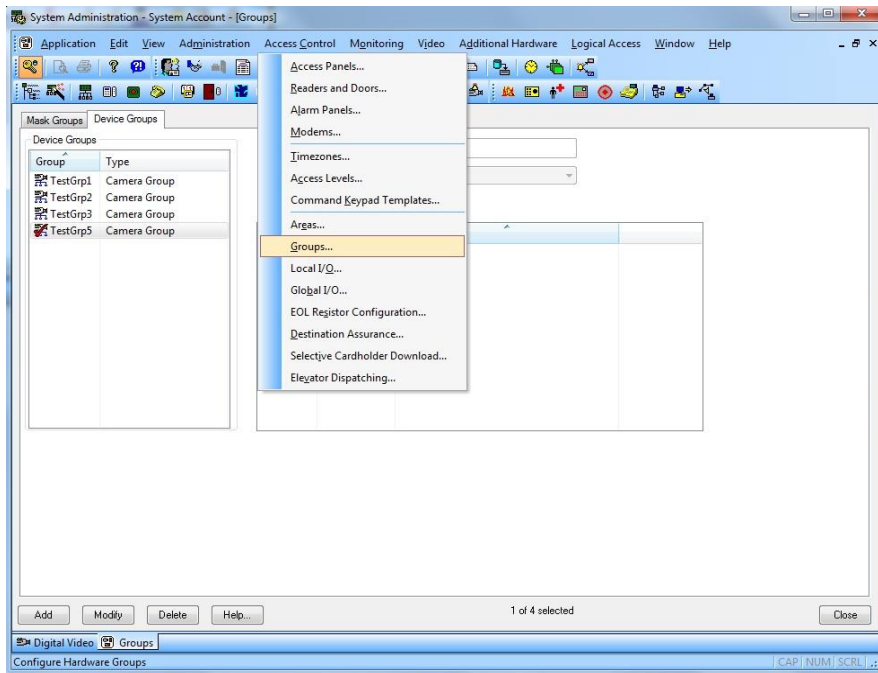
Select required values for Start Time, End Time, Camera, Codec and File to export to. Click “Export” to export the video for selected duration to the specified file.

Camera Tours

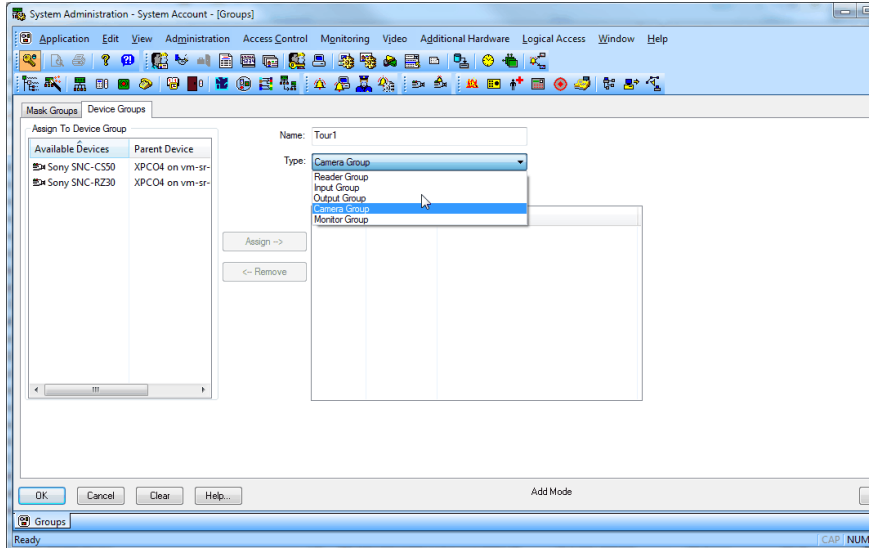
Configure Camera groups (Tours) in “System Administration” and view the Tours in “Alarm Monitoring” application.

Creating a Tour

Launch “System Administration” in OnGuard. Click on “Access Control” menu and click on “Groups ...” menu item.

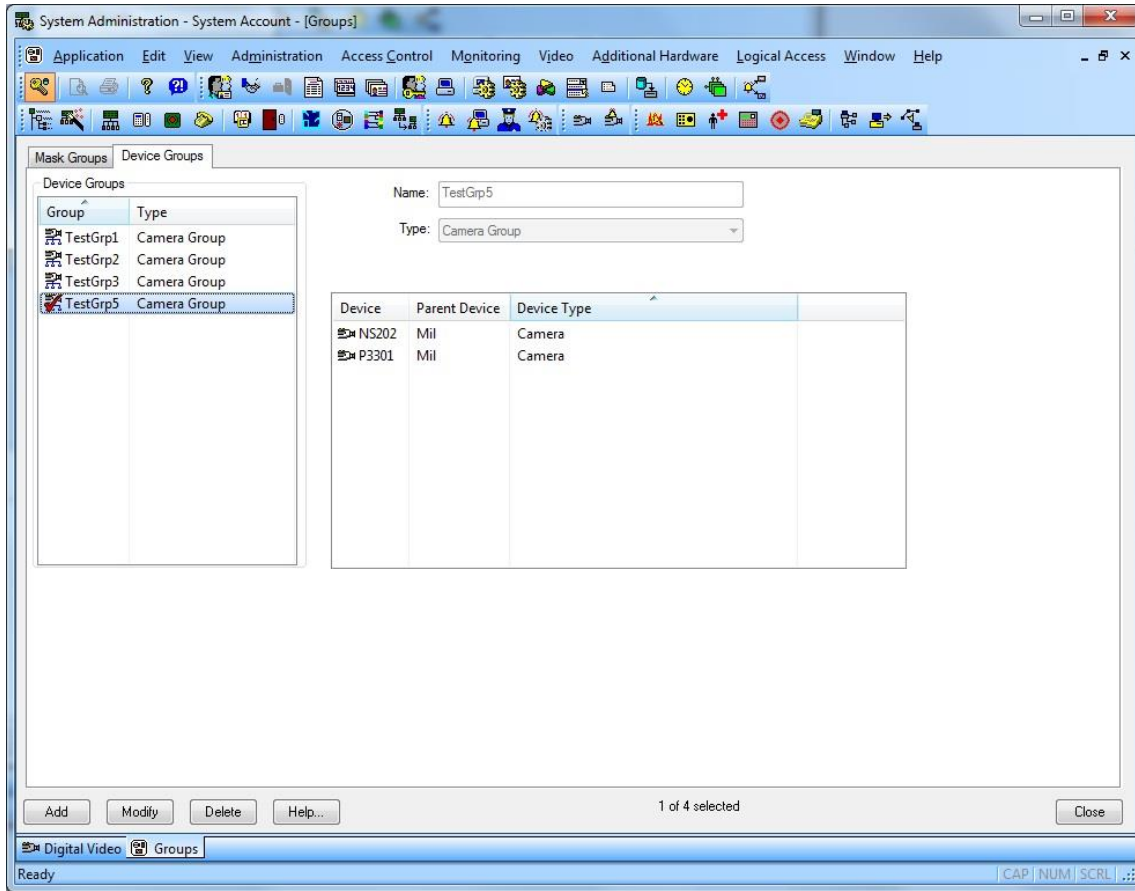


Select “Device Groups” tab on the upper left portion of the screen.
Click the Add button on bottom left portion of the screen.



- For Name, enter the name for the new group.
- For Type, select Camera Group from the drop down items.
- Cameras available for assigning to the group will be displayed under “Available Devices” in the left hand side of the screen. Click on the icon of any camera which is to be added to the group. The “Assign” button gets enabled. Click on “Assign” button to add the camera to the group.

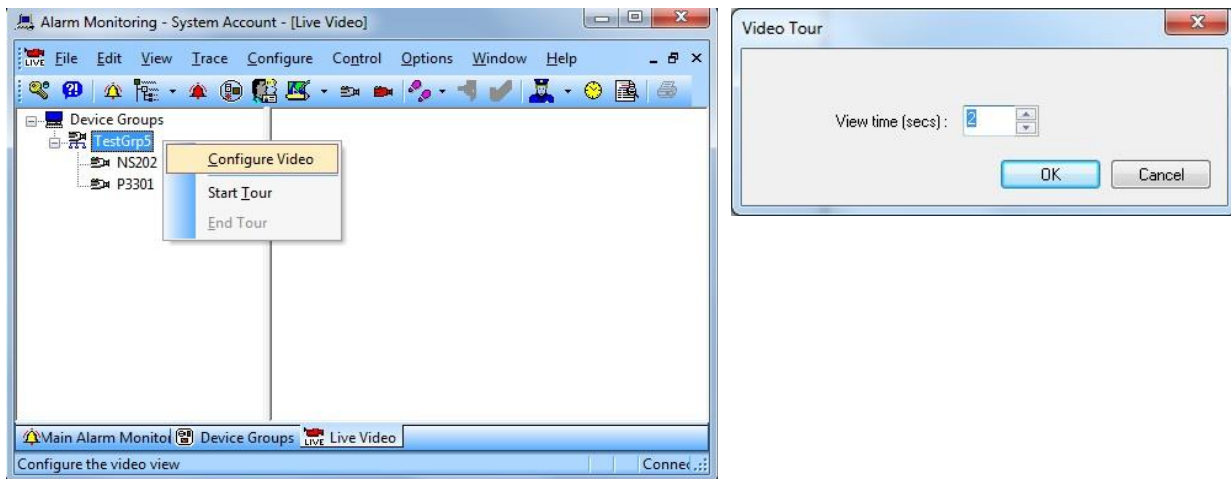
Repeat process to add all required cameras to the group. Click OK to save the settings.



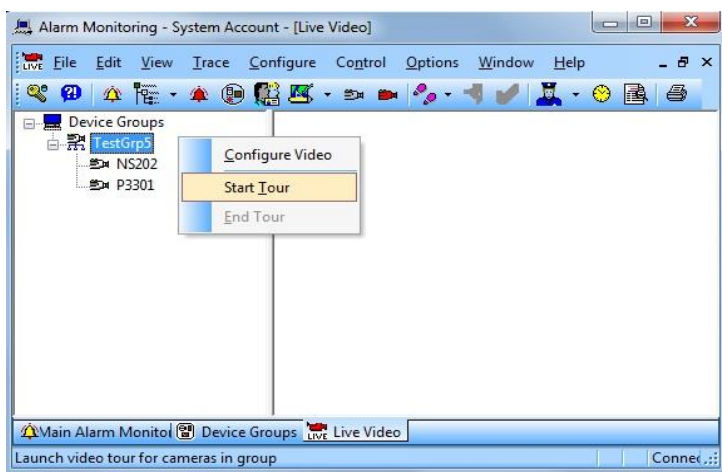
Viewing Tour

Launch “Alarm Monitoring” application in OnGuard.

Click on “View” menu and click on “Device Groups” menu item. Right click on the camera group and click on “Live Video”. Select the required group on the Live Video tab and right click on “Configure Video”.



Set the dwell time to stream video for each camera before video switches to the next camera in the group. Press OK to save settings.



To start a tour, right click on the camera group and select “Start Tour”. Live video from each the cameras in the group will be displayed in the screen sequentially streaming video from each camera for the dwell time before switching to the next camera. Click on “End Tour” to stop the tour.

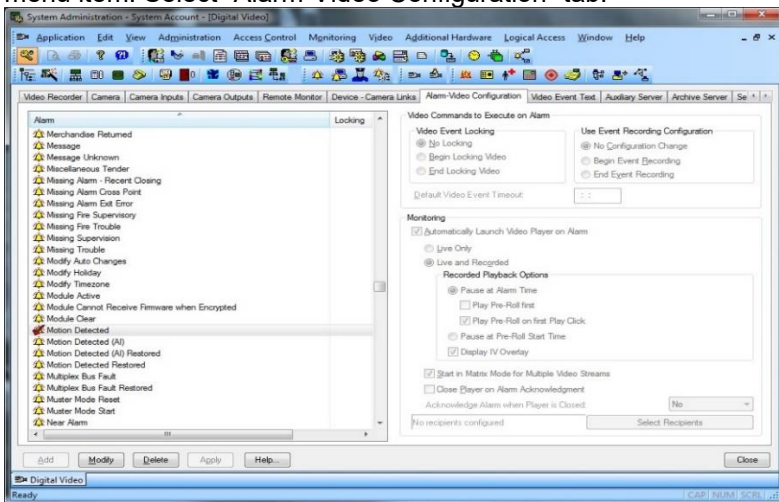
Viewing Video linked to alarms

Event Video (Live and/or playback)

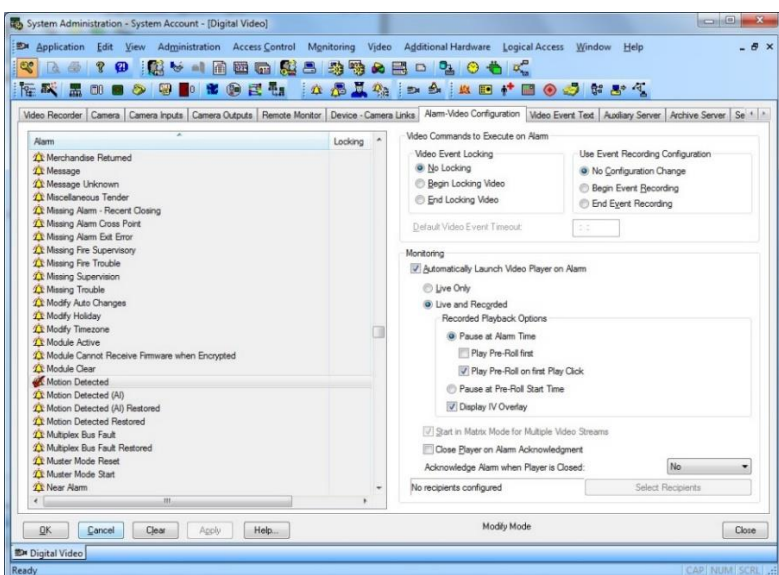
Configure the link between Alarms and Video in “System Administration” and view the Video when alarm occurs in “Alarm Monitoring” application. OnGuard can be configured to display live and or playback of one or multiple cameras when alarm is triggered. The following example shows how to configure OnGuard to automatically display video when Motion is detected.

Alarm-Video Configuration

Launch “System Administration” application in OnGuard. Click on “Video” menu. Click on “Digital Video ...” menu item. Select “Alarm-Video Configuration” tab.



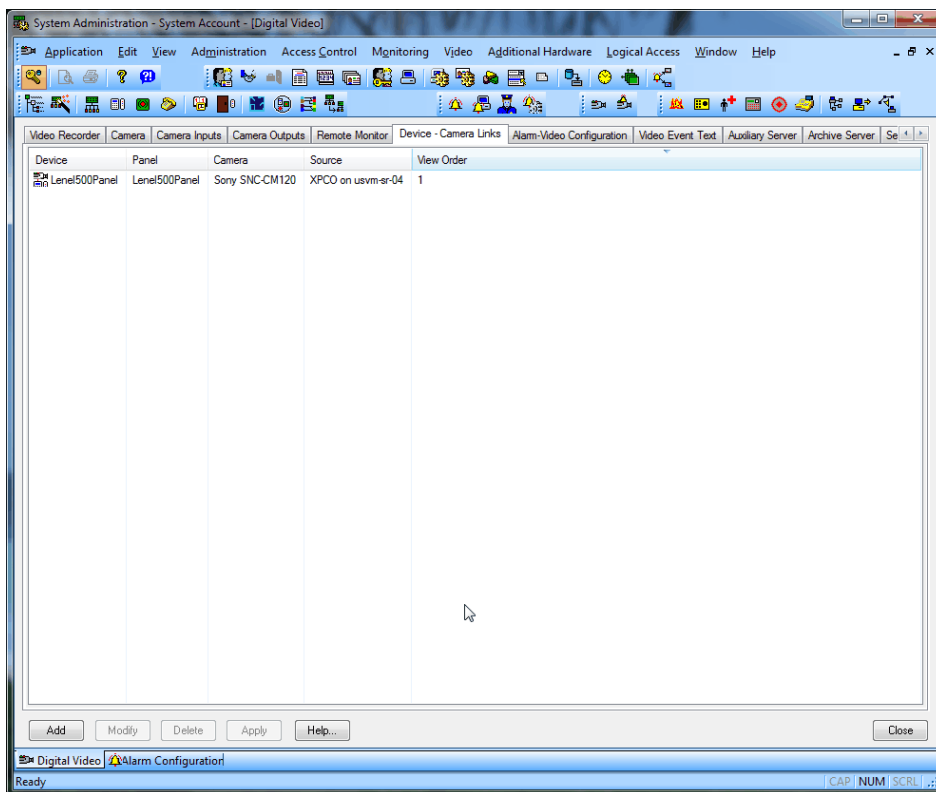
Select the required alarm that will be linked to video. In this case, select “Motion Detected”. Click Modify to modify the existing response to the alarm.



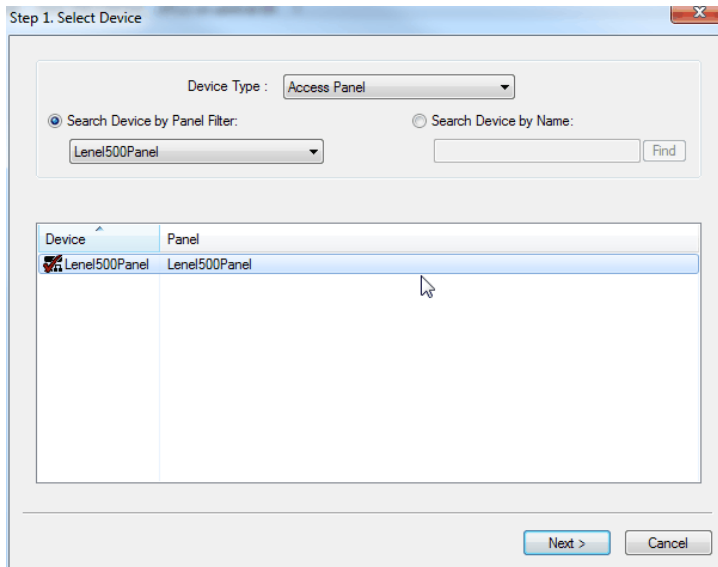
Check the “Automatically Launch Video Player on Alarm” checkbox and select “Live Only” or “Live and Recorded options”. Click OK to save the configuration.

Device-Camera Links Configuration

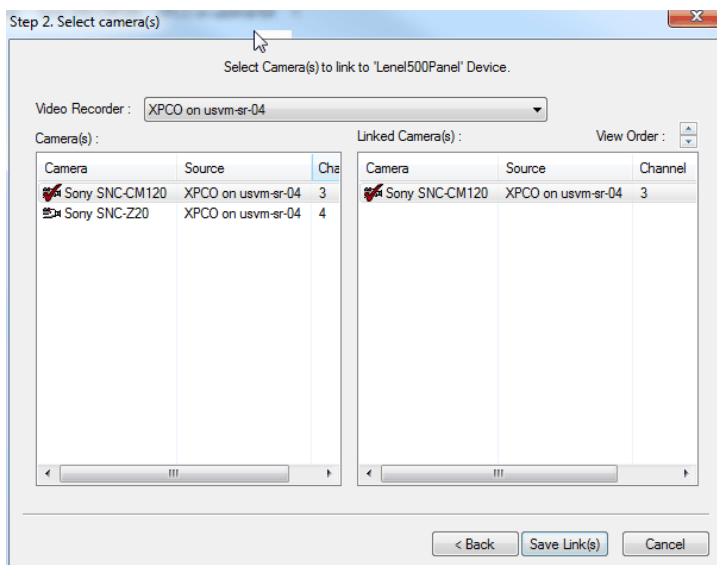
Launch “System Administration” application in OnGuard. Click on “Video” menu. Click on “Digital Video ...” menu item. Select “Device-Camera Links Configuration” tab.



Click Add to start the process of linking a camera to a device.



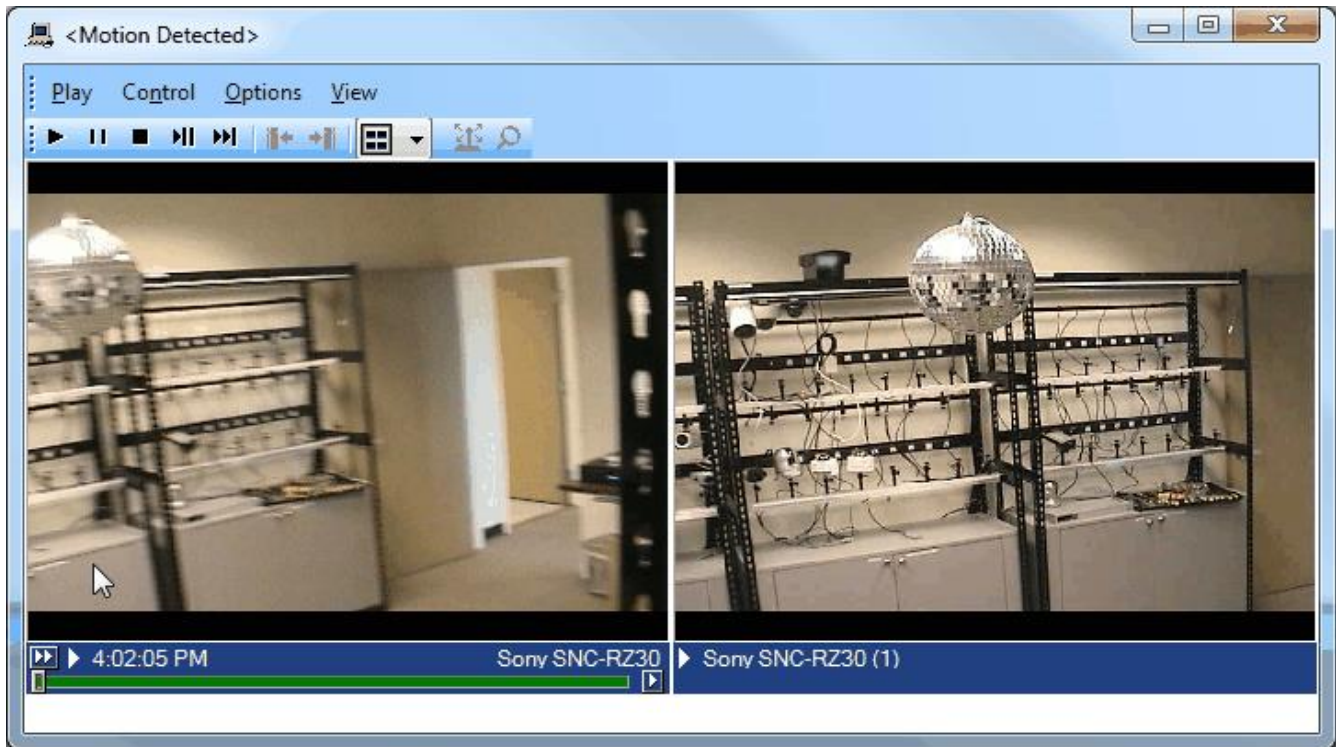
Choose “Device Type” from the dropdown and select the required device. Click Next to select the camera to be linked.



Choose the Video Recorder from the dropdown and select the required camera. Click on Save Links to save the linking.

Video display on alarm

Launch “Alarm Monitoring” application in OnGuard. When Motion is detected, a VideoViewer window will be launched displaying either live video or live and recorded video as configured, from the camera which detected motion.



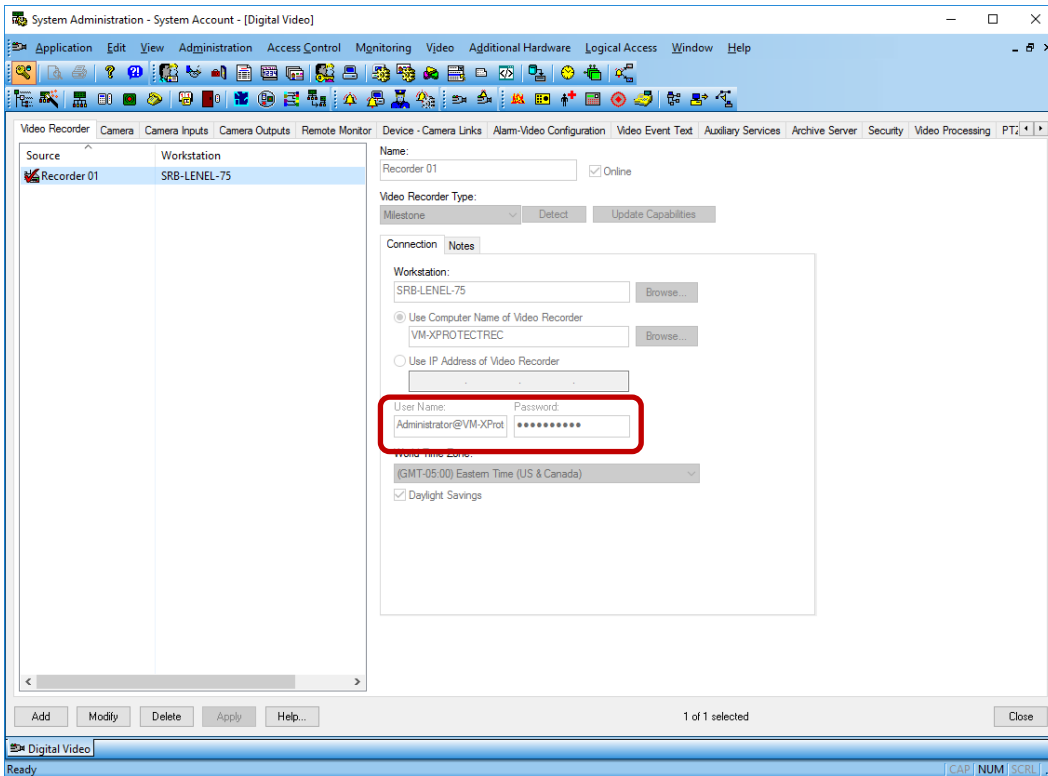
Upgrading from a previous version of the AddOn

In previous versions of the Add-On, the Management Server hostname, credentials and the list of cameras in XProtect were stored in an XML config file on disk using the MilestoneCfgGen.exe command-line tool (now retired). When upgrading the Add-On to version 1.8 or greater, this tool and the XML config file are no longer needed, and all the connection parameters must now be provided directly in the Lenel UI (see Adding Recorder section).

While the Add-On will still work right after upgrading from a previous version (because there is a backward compatibility provision in the code that still reads the XML Config file when the required information cannot be found in Lenel), it is recommended to perform the two steps below to completely remove the dependency on the XML file:

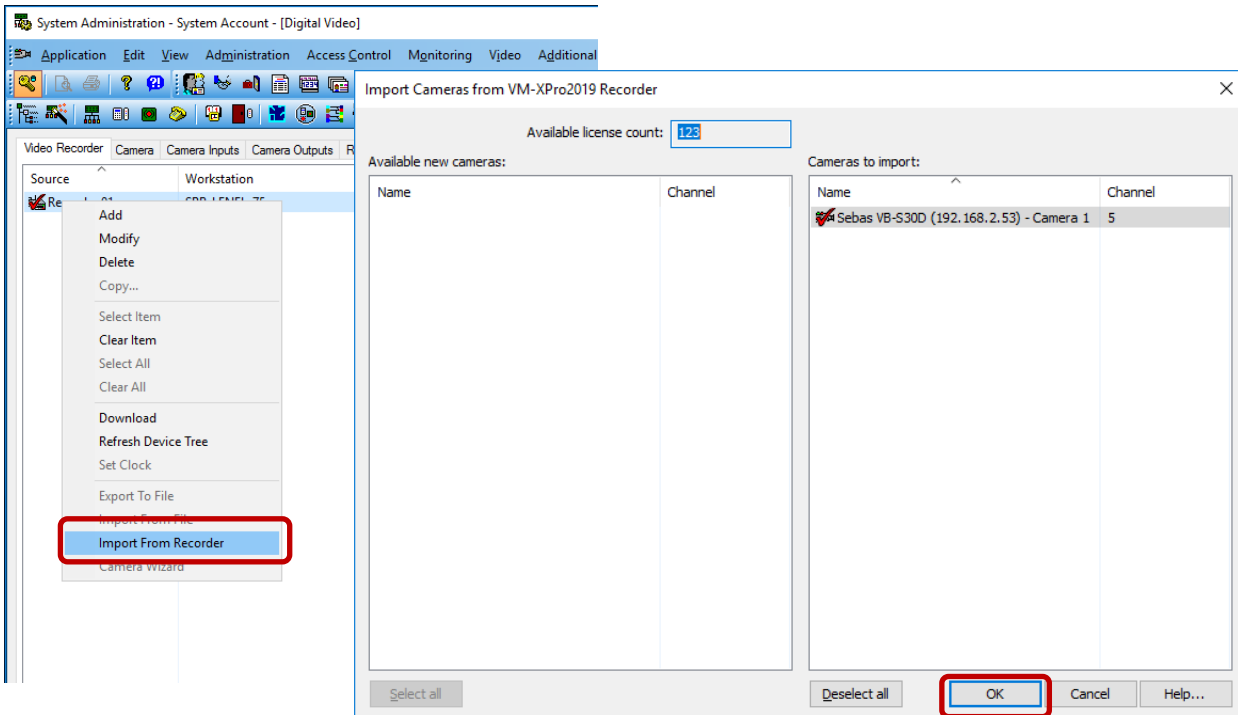
Fill missing connection information in Lenel UI

Select each configured recording server in System Administration, click Modify and fill the username and password fields (using the XProtect username and the Management Server hostname or IP separated by an '@' character for the username field, as described in the "Adding Recorder" section above), then click OK.



Force Lenel UI to update camera list in Lenel database

For each configured recording server in System Administration, right-click and select "Import From Recorder", then click OK. This will force OnGuard to refresh its internal camera mapping.



Logging

By default, the logs are enabled on both the OnGuard workstation side and the OnGuard server side, but they are in reduced information mode (Info). They can be increased for diagnostics purposes to Debug but be aware that this change causes more information to be logged using more disk space and possibly slowing down operations on busy servers. **DO NOT LEAVE logging at Debug levels** for extended periods of time for performance reasons. It should only be used for diagnostics purposes and put back to Info afterwards.

Gathering the logs

OnGuard workstation side

1. On each machine running the OnGuard workstation that uses the integration goto **x:\ProgramData\MilestoneTrans**, where X: is the drive where Windows is installed
2. Create a zip file of the contents of that whole folder, name it **MilestoneTrans-{MachineName}.zip** where {MachineName} is the name of the machine where the Lenel integration is installed.

OnGuard server side

3. On each machine running the OnGuard LS Communication Server goto **X:\ProgramData\MilestoneTrans**, where X: is the drive where windows is installed
4. Create a zip file of the contents of that whole folder name it **MilestoneTransSvr-{MachineName}.zip** where {MachineName} is the name of the machine where the Lenel integration is installed.
5. On clustered OnGuard servers, make sure that you capture the logs on all the machines that are part of the cluster, especially the active one.

Changing logging level

Sometimes for diagnostics purposes, it is necessary to obtain more information about the running state of the integration. The logging information can be increased by changing what we call the logging level. The logging level can be set at any of the following values in increasing amount of information recorded to file (Off, Fatal, Error, Warn, Info, Debug, Trace). Off writing no information to file and Trace writing the most information to file. The default setting is Info. The logs auto-delete after 10 days, so they do not take up too much disk space. Here is the procedure to change the log levels in the different modules of the integration:

OnGuard workstation side

1. On each machine running the OnGuard workstation goto **x:\ProgramData\MilestoneTrans**, where X: is the drive where Windows is installed
2. Find a file named **"MilestoneTrans-NLog.xml"**, open it with a text editor like notepad
3. The second to last line in the file is like this **"<logger name="" minlevel="Info" writeTo="mainlog" />"**
4. Change the **"Info"** to **"Debug"** in that line and save the file.
5. Depending on the OS you are running you may have to save the file to the desktop and copy it back to that folder because windows permissions will not let you save a file there directly.

OnGuard server side

1. On each OnGuard machine running the LS communication server machine goto **x:\ProgramData\MilestoneTrans**. X: would be the drive where windows is installed.

- a. Find a file named "**MilestoneTrans-NLog.xml**", open it with a text editor like notepad
- b. The second to last line in the file is like this "**<logger name="" minlevel="Info" writeTo="mainlog" />**"
- c. Change the "**Info**" to "**Debug**" in that line and save the file.
- d. Depending on the OS you are running you may have to save the file to the desktop and copy it back to that folder because windows permissions will not let you save a file there directly.

Troubleshooting

1. Issues when discovering Milestone Cameras

- Make sure the OnGuard LS Communication Service is running.
- Make sure the credentials and Management Server hostname provided in the UI are valid (validate the same credentials and hostname work with XProtect Smart Client).
- Log completely out of System Administration application and log back in.

2. Live or Playback doesn't work

- If the problem is with video only (black tiles) and Recording server data encryption is enabled in XProtect, please verify that the appropriate certificate is installed and trusted on every OnGuard client machine where video is displayed (see Limitations section for more details)

3. When the OnGuard Add-on is installed on Win 2008, an error is thrown with the following info: An assembly registration error has occurred, the following file failed to register: LnrlInput.dll (RegAsm return code #100).

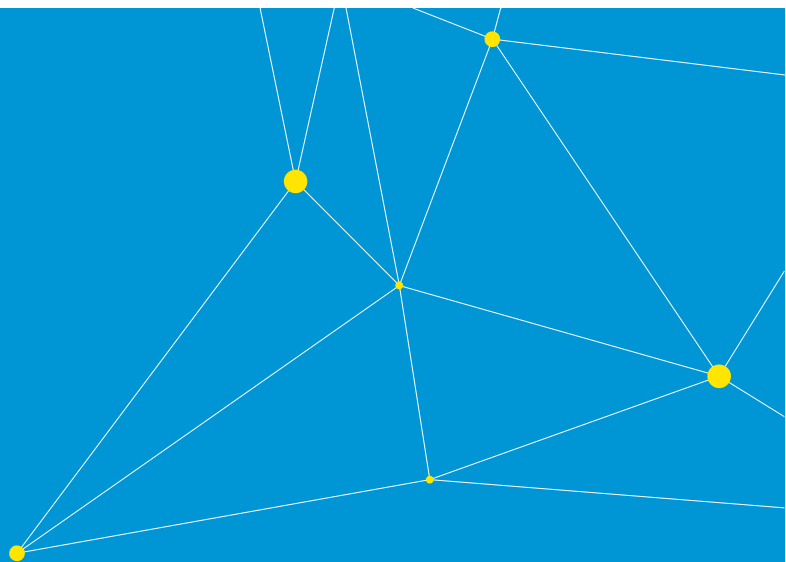
- Ensure you are logged on as Administrator and retry the installation again.

4. Cameras status may show up as offline with red cross-mark though video can be viewed.

- Ensure Communication server is running.

5. "Error communicating with Video Recorder" message in Alarm Monitor when clicking "Launch Video" of selected Milestone camera. Video can be viewed in VideoViewer and System Admin apps.

- Stop Communication server. Change file name of ProgramFiles(x86)/OnGuard/ LnISky-PointBaseServerTranslatoru.dll to LnISkyPointBaseServerTranslatoru_bak.dll. Restart Communication Server and Alarm Monitoring application.
- Ensure Milestone servers and OnGuard servers are online and connected to network.



Milestone Systems is a leading provider of open platform video management software; technology that helps the world see how to ensure safety, protect assets and increase business efficiency. Milestone enables an open platform community that drives collaboration and innovation in the development and use of network video technology, with reliable and scalable solutions that are proven in more than 150,000 sites worldwide. Founded in 1998, Milestone is a stand-alone company in the Canon Group.