



## Milestone XProtect Access: CCure 9000 Version 1.4 QuickStart

### Integration Capability

XProtect Access integration with CCure 9000. View status of access control system, cardholders, controlled doors, readers and other devices in XProtect Smart Client. Control CCure hardware in XProtect. Trigger alarms, pop-ups, video display, recordings and events within XProtect from CCure actions.

Review version compatibility here: <https://download.milestonesys.com/ccure9kxpa/CCure9000-XProtect-Access-Compatibility.pdf>

### CCure 9000: Configuration Requirements

Victor Web Service must be installed and configured with CCure 9000.

### CCure 9000: Licensing Requirements

License requirements are based on the number of readers in the system, and the version of CCure 9000. For details, please refer to the Milestone XPA CCure 9000 User Guide.

### Milestone XProtect®: Requirements

Milestone XProtect® Access Plugin <http://Download.milestonesys.com/CCure9kXPA>

#### Milestone XProtect® Access Licensing

Base License	Part Number: XPA-BL
Device License for each managed door	Part Number: XPA-DL

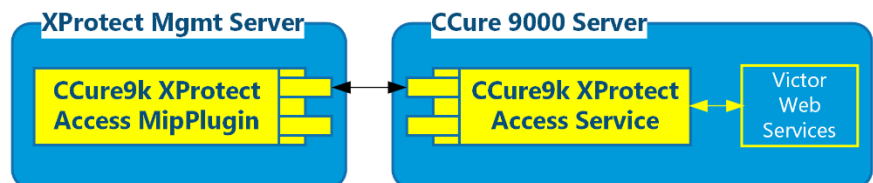
### Installation of 2 independent software components:

#### CCure 9000 Server

1. CCure 9000 XProtect Access Service

#### Milestone XProtect® Server

2. CCure 9000 XProtect Access MIP Plugin





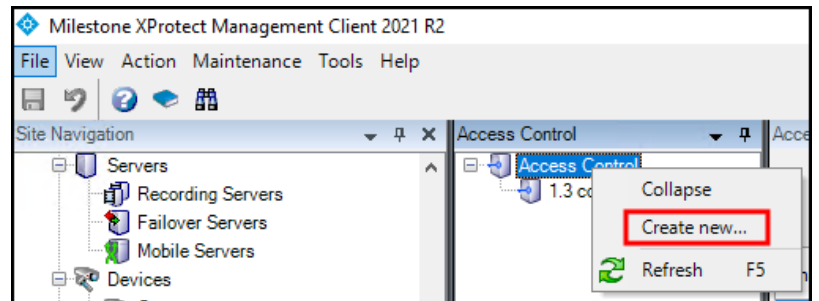
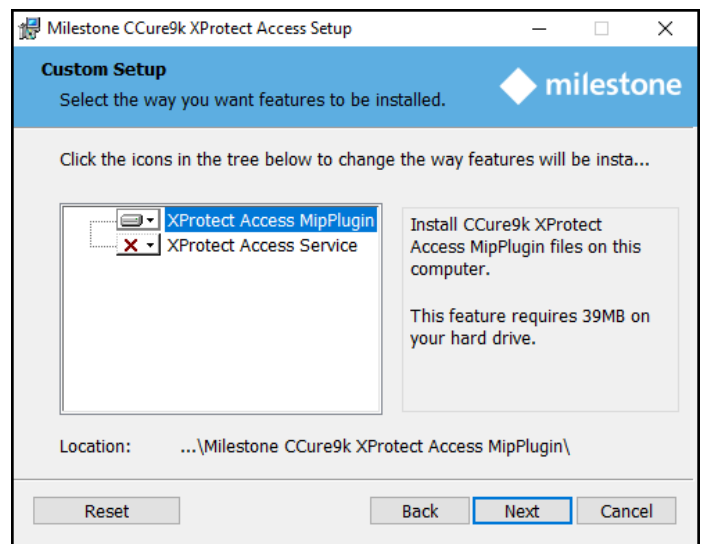
## Installation

Run the intelligent XProtectAccess.CCure9k.msi installer on both the CCure 9000 system and the Milestone XProtect system to deploy the integration components.

For more details see the [User Guide](#).

### In the Management Client:

Create an instance of the XProtect Access CCure 9000 server.



## More Information

For more information, including details for each of these steps, see the Milestone XPA CCure 9000 [User Guide](#).