

Milestone XProtect Access : CCure 9000 Version 1.1 Quickstart

Integration Capability

Product Name	Versions Supported
CCure 9000	2.70 SP3 CU1 and up 2.80 and up
Milestone XProtect®	2017 R1 and up

vCCure 9000: Configuration Requirements

Victor Web Service must be installed and configured with CCure 9000.

CCure 9000: Licensing Requirements

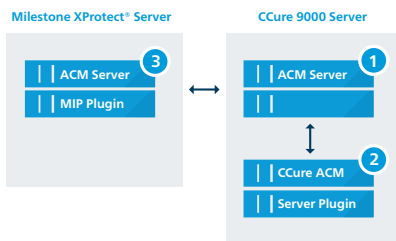
Victor Web Service licensed feature must be enabled. For advanced scenarios, please refer to the Milestone ACM CCure 9000 User Guide.

Milestone XProtect®: Requirements

Milestone XProtect® Access Plugin <http://Download.milestonesys.com/CCure9kACM>

Milestone XProtect® Access Licensing

Base License	Part Number: XPA-BL
Device License for each managed door	Part Number: XPA-DL



Installation of 3 independent packages:

CCure 9000 Server

1. Milestone.ACMServer.x64.msi
2. Milestone.ACMServer.CCure9k.msi.

Milestone XProtect® Server

3. Milestone.ACMServer.MipPlugin.msi.



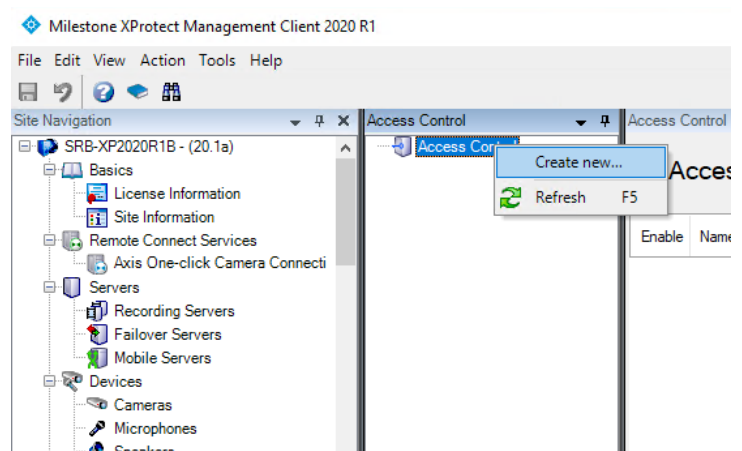
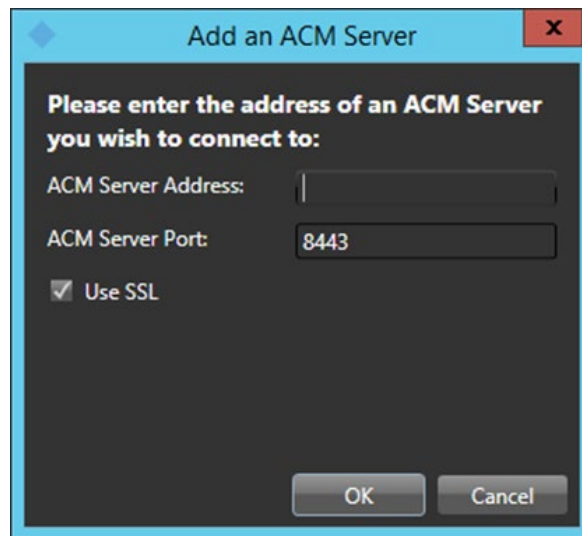
Configuration

Run the ACM Server Configuration Wizard on the Milestone XProtect® Server to deploy the necessary MIP plugin in XProtect®.

For more details see the User Guide.

In the Management Client:

Create an instance of the XProtect Access CCure 9000 Server.



More Information

For more information, including details for each of these steps, see the Milestone ACM CCure 9000 User Guide.