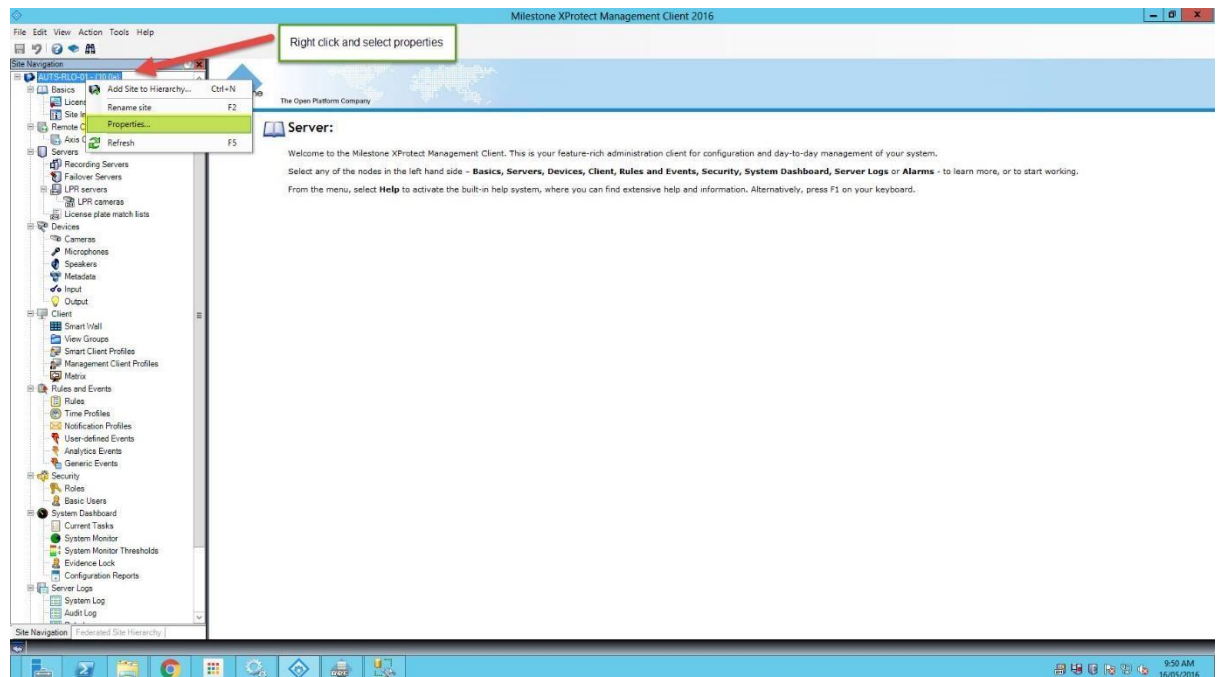
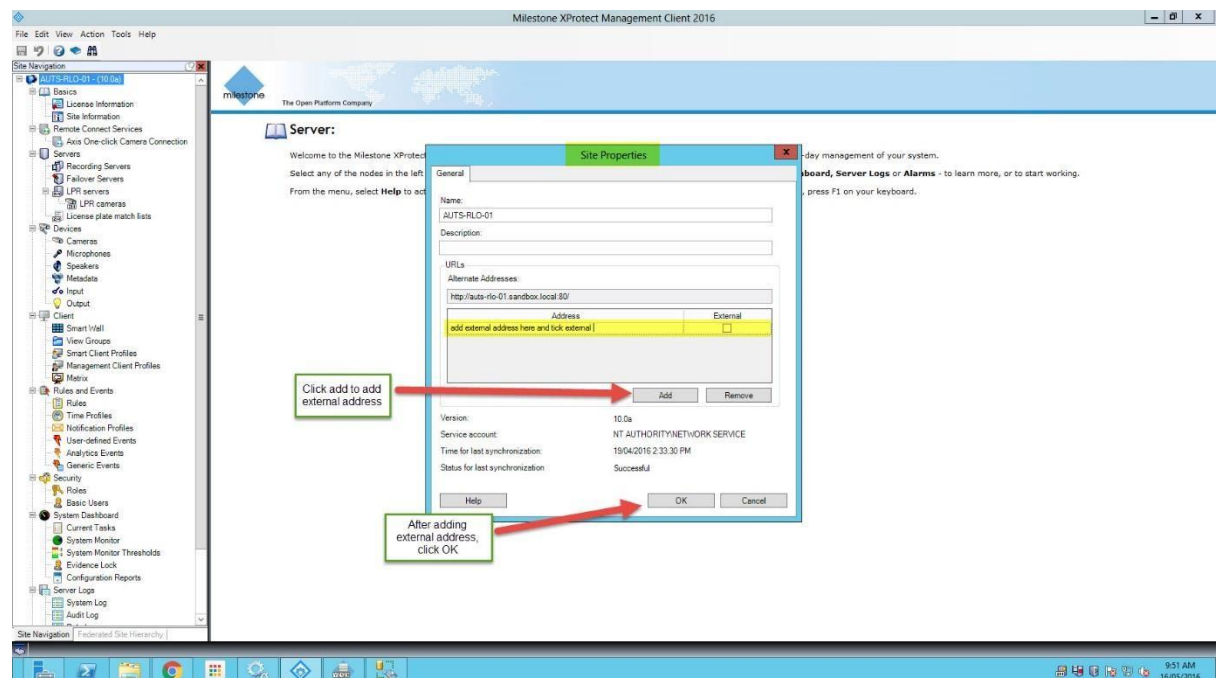


Access smart client over WAN in XProtect Corporate.

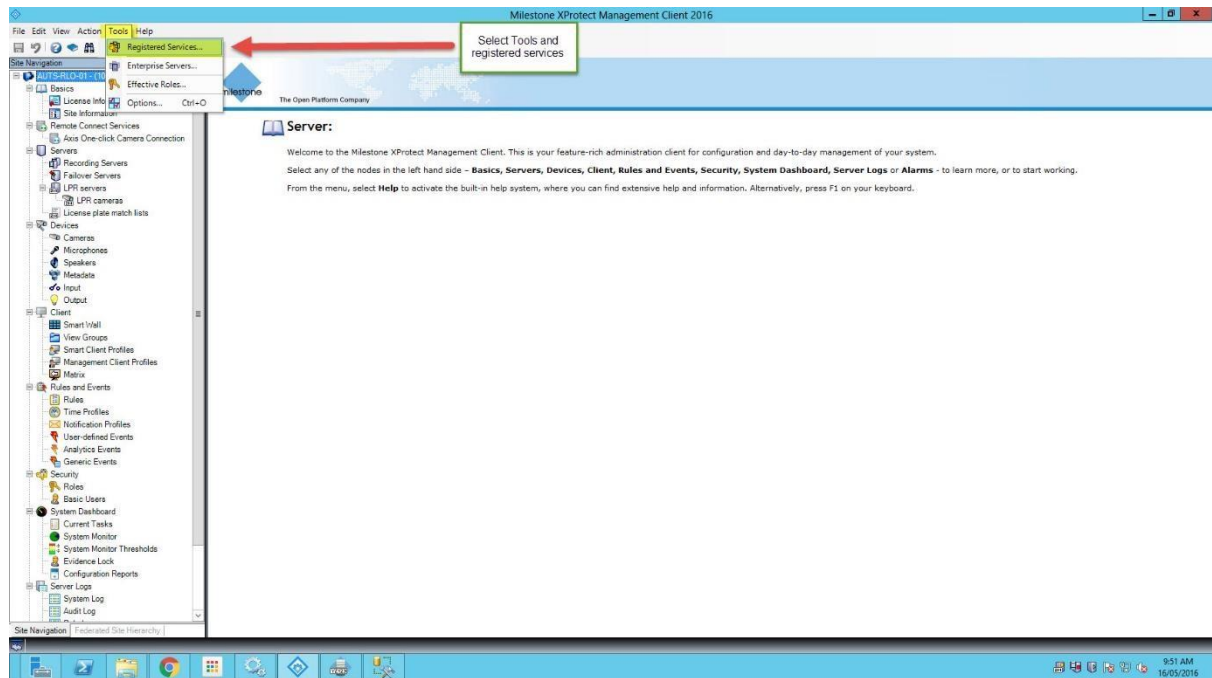
1. Open Milestone XProtect Management Client, right click on site and select properties.



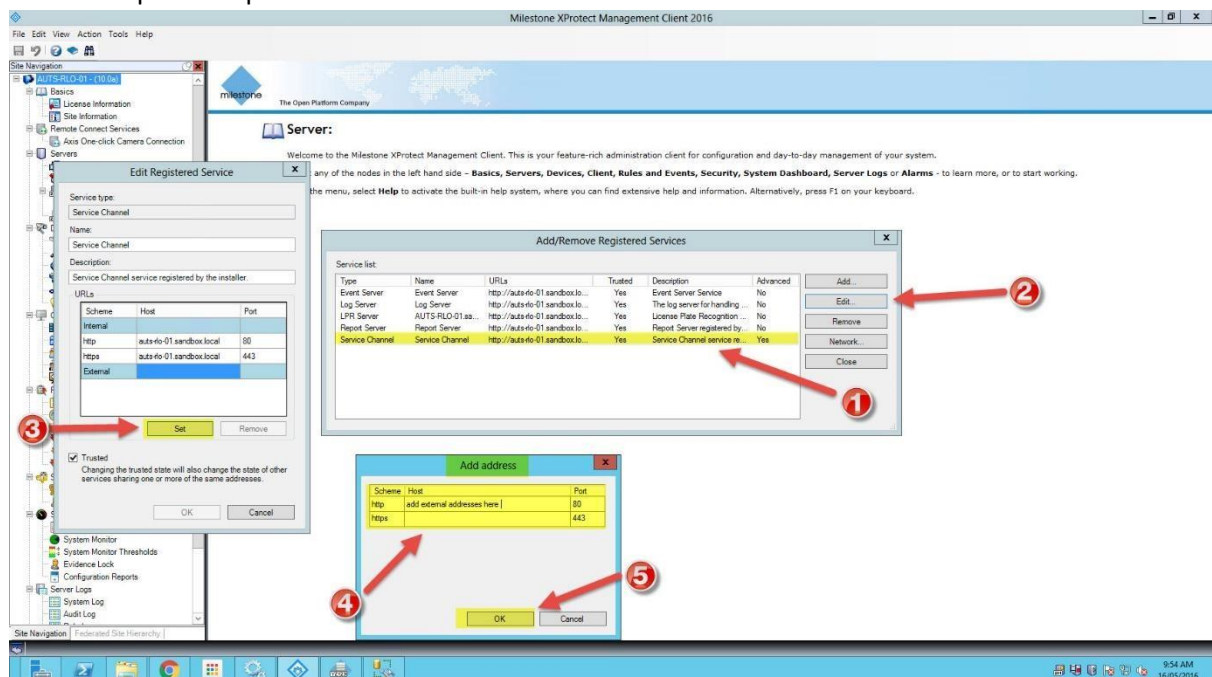
2. Once in the site properties, click “add” and add an external IP address. Make sure you tick “external” before clicking OK.



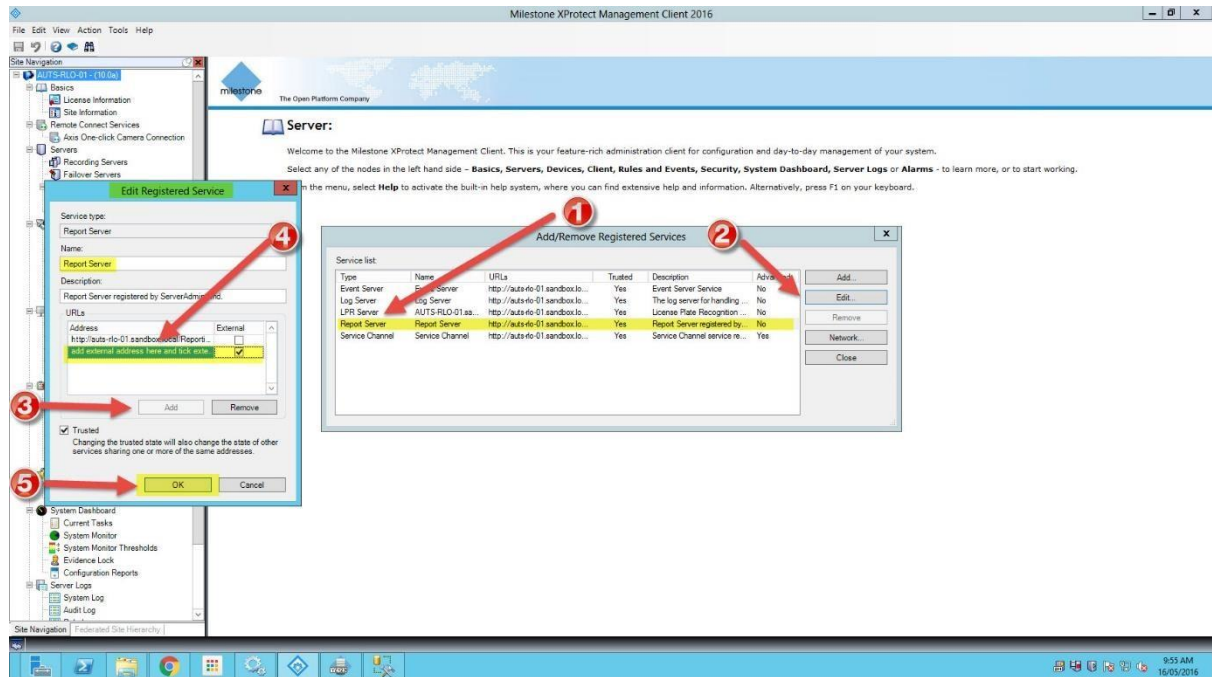
3. Once you have done that, click on Tools and select registered services.



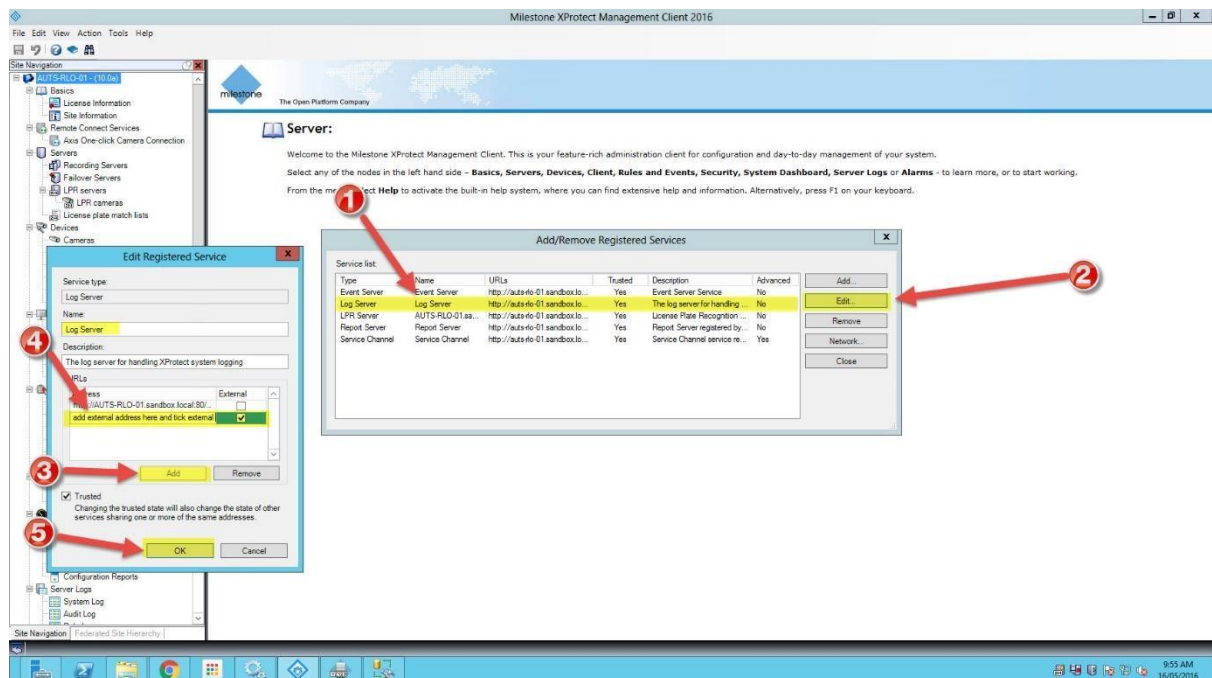
4. Next you will need to select the “Service Channel” and click on edit, once in there choose set and add http and https external addresses and click OK.



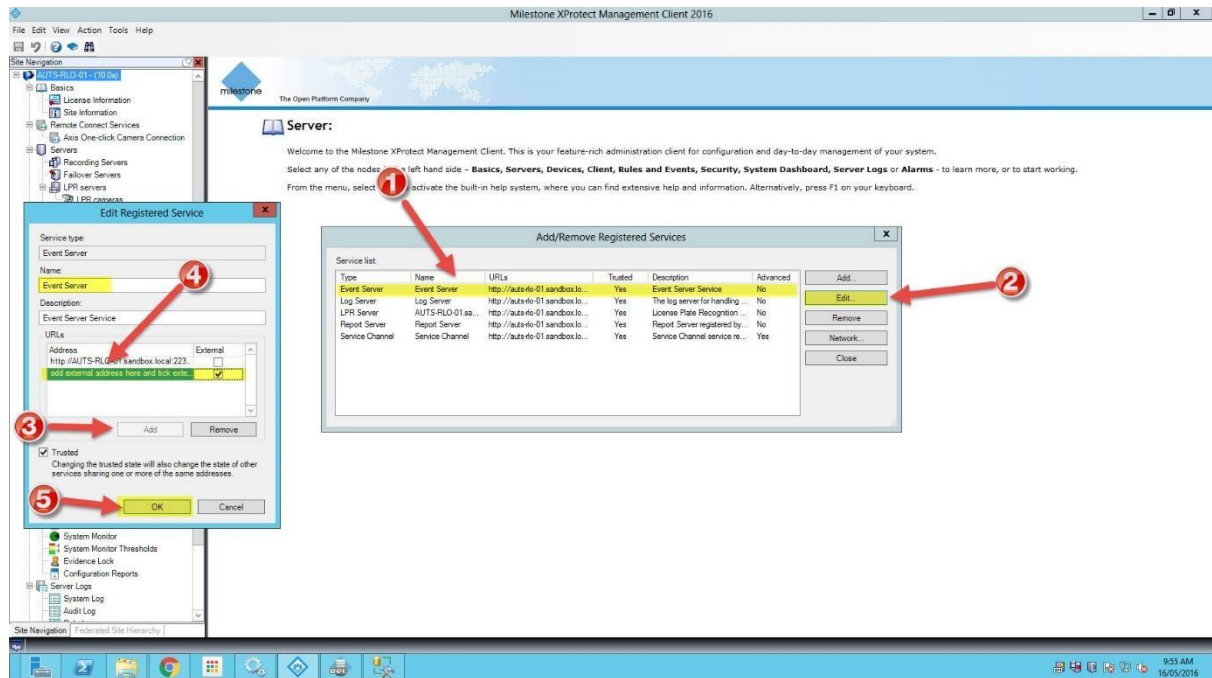
- Next you need to select the “Report Server” in the list and select edit and press add. Please add the external IP addresses in there and click on OK.



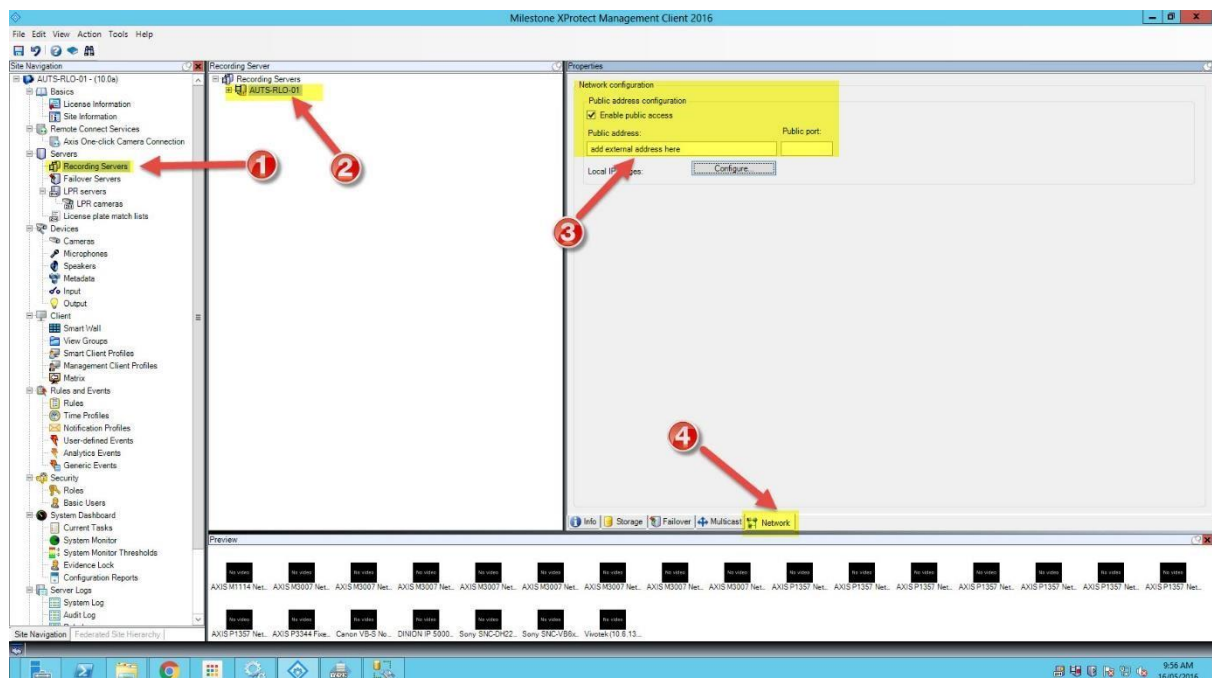
- Now you need to select the “Log Server” and click on Edit and Add. Input your external IP address and click on OK.



- Click on the “Event Server” and click on Edit and Add. Input your external IP address and click on OK.



- Now, close the Registered Services dialog box and click on the recording server. When the recording server is selected, click on the Network section of the recording server properties.



If you have more than one recording server, please make sure you do this on the rest of them.

Ports to open on your Firewall:

Management server: 80, 443, 22331,

Recording server: 7563

Please make sure you setup port translation from your custom external port to 7563 on the router once it's all setup.