



Milestone XProtect Access : OnGuard Version 3.4 QuickStart

Integration Capability

Product Name	Versions Supported
OnGuard	7.4 and up
Milestone XProtect®	2017 R1 and up

OnGuard: Configuration Requirements

OnGuard must be configured to use Single Sign-On (SSO).

OnGuard: Licensing Requirements

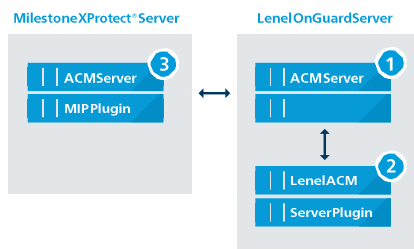
Type of Connection	OnGuard License Options Needed
DataConduit	Maximum Number of DataConduit Clients (SWG-1140) must be >=1
Open Access	Partner Integration (ITM-MLST-001) enabled with an expiration date Partner Integration (IPC-311-MLST01) enabled with an expiration date

Milestone XProtect®: Requirements

Milestone XProtect® Access Plugin <http://Download.milestonesys.com/LenelACM>

Milestone XProtect® Access Licensing

Base License	Part Number: XPA-BL
Device License for each managed door	Part Number: XPA-DL



Installation of 3 independent packages:

OnGuard server

1. Milestone.ACMServer.msi: When prompted, specify the linked OnGuard SSO as the user.
2. Milestone.ACMServer.OnGuard.msi.

Milestone XProtect® Server

3. Milestone.ACMServer.MipPlugin.msi.



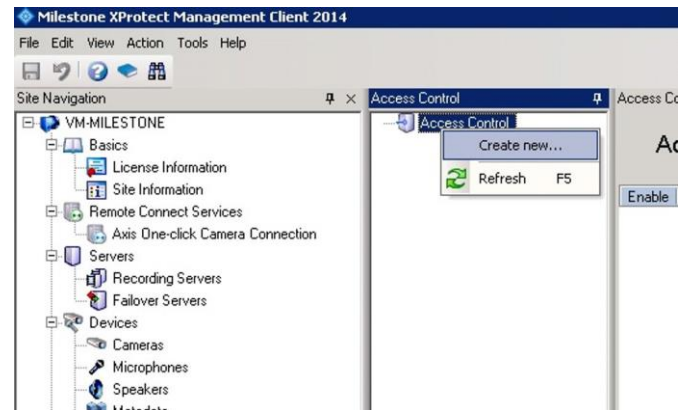
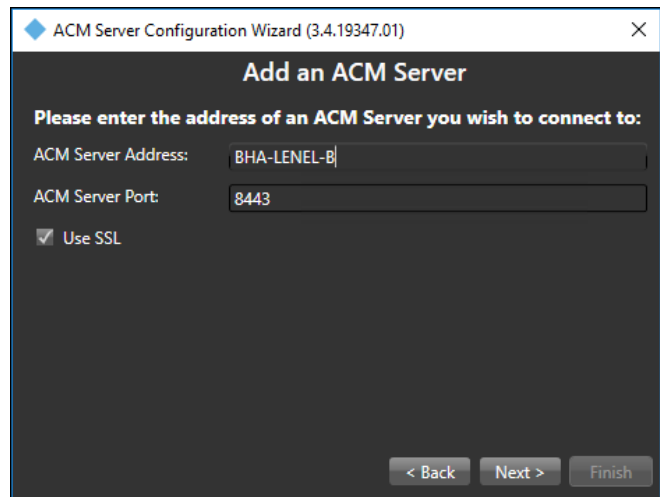
Configuration

Run the ACM Server Configuration Wizard on the Milestone XProtect® Server to deploy the necessary MIP plugin in XProtect®.

For more details see the User Guide.

In the Management Client:

Create an instance of the XProtect Access OnGuard server.



More Information

For more information, including details for each of these steps, see the Milestone ACM OnGuard User Guide.