



## Milestone XProtect Access : OnGuard Version 3.0 QuickStart

### Integration Capability

Product Name	Versions Supported
OnGuard	7.1 and up
Milestone XProtect®	2016 R3 and up

### OnGuard: Configuration Requirements

OnGuard must be configured to use Single Sign-On (SSO).

### OnGuard: Licensing Requirements

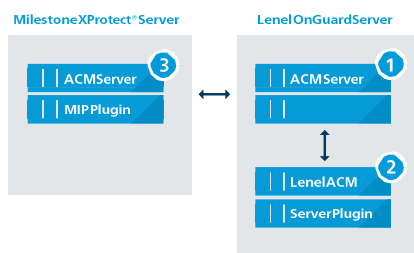
Type of Connection	OnGuard License Options Needed
DataConduit	Maximum Number of DataConduit Clients (SWG-1140) must be $\geq 1$
Open Access	Maximum Number of OpenAccess Clients (ITM-MLST-001) must be $\geq 1$

### Milestone XProtect®: Requirements

Milestone XProtect® Access Plugin <http://Download.milestonesys.com/LenelACM>

#### Milestone XProtect® Access Licensing

Base License	Part Number: XPA-BL
Device License for each managed door	Part Number: XPA-DL



### Installation of 3 independent packages:

#### OnGuard server

1. **Milestone.ACMServer.msi**: When prompted, specify the linked OnGuard SSO as the user.
2. **Milestone.ACMServer.OnGuard.msi**.

#### Milestone XProtect® Server

3. **Milestone.ACMServer.MipPlugin.msi**.



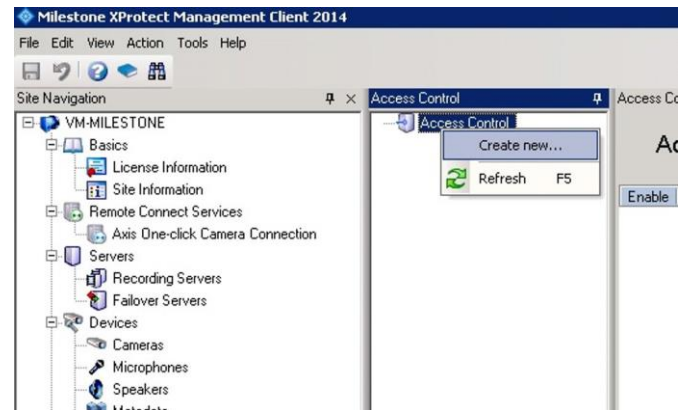
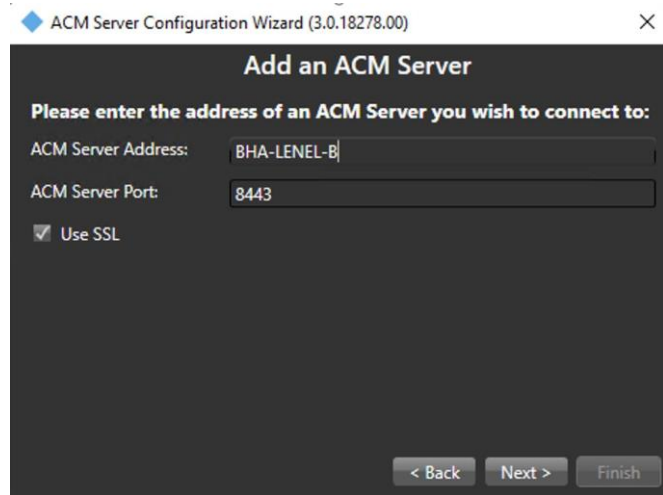
### Configuration

Run the ACM Server Configuration Wizard on the Milestone XProtect® Server to deploy the necessary MIP plugin in XProtect®.

For more details see the User Guide.

### In the Management Client:

Create an instance of the XProtect Access OnGuard server.



### More Information

For more information, including details for each of these steps, see the Milestone ACM OnGuard User Guide.